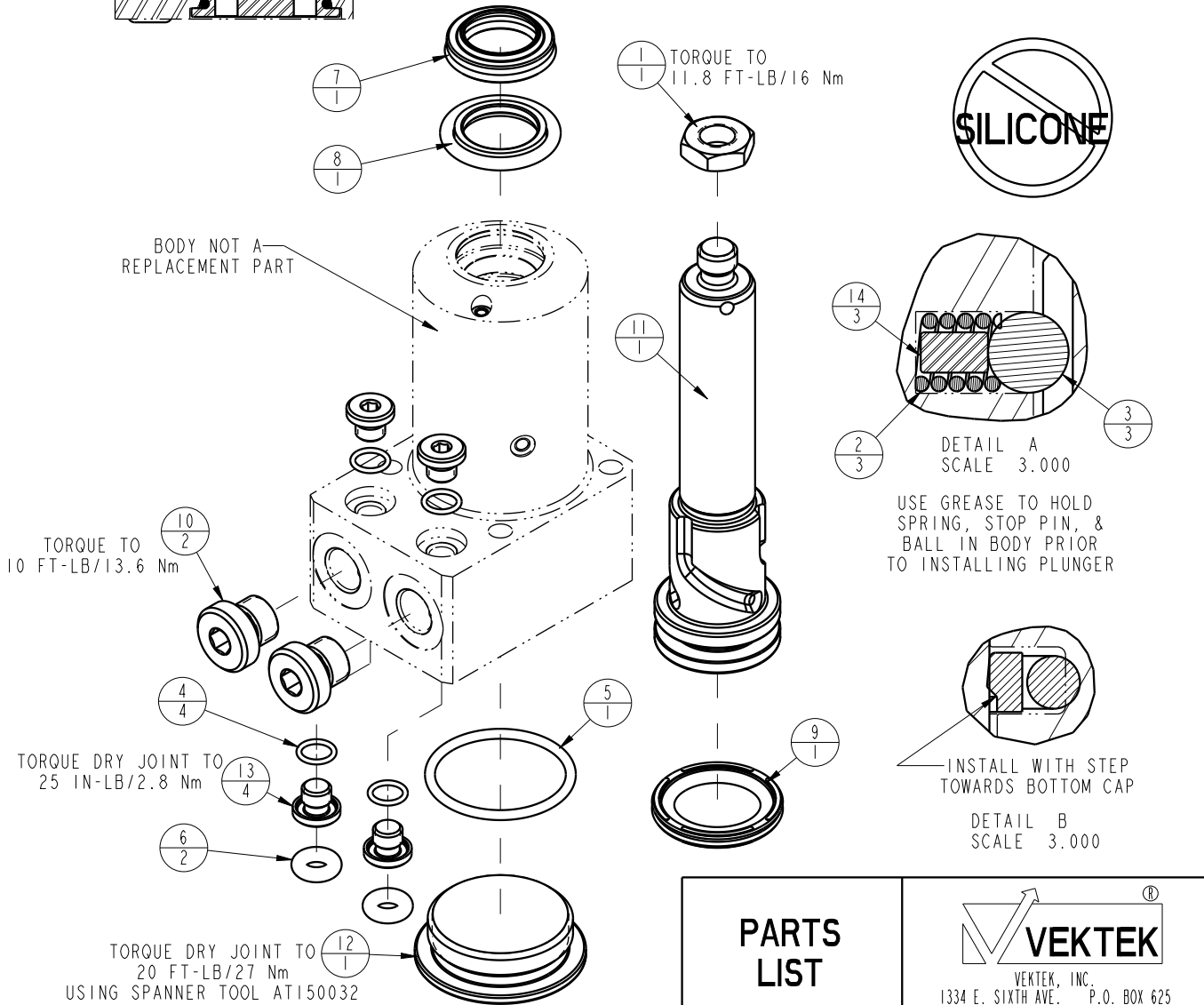
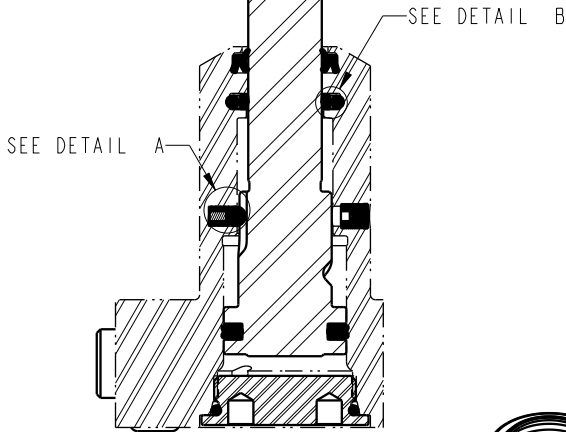


| NO  | QTY | PART NO  | DESCRIPTION                              | SEAL KIT |
|-----|-----|----------|--|----------|
| 1   | 1   | 21510000 | NUT, JAM, HEX, M8-1.00                   |          |
| 2   | 3   | 23350085 | SPRING, COMPRESSION                      | X        |
| 3   | 3   | 23650009 | BALL, TUNGSTEN-CARBIDE, 4mm              | X        |
| 4   | 4   | 39051079 | O-RING, (6mm X 1)                        | X        |
| 5   | 1   | 39051081 | O-RING, (26mm X 2)                       | X        |
| 6   | 2   | 39051087 | O-RING, (4mm X 3)                        | X        |
| 7   | 1   | 39053041 | SEAL, WIPER, SNAP IN, WED, 15, 94A, AU   | X        |
| 8   | 1   | 39056001 | SEAL, STEP, ROD, 15                      | X        |
| 9   | 1   | 39056021 | SEAL, CAP, PISTON, 25, 90A, AU GRPHT FLD | X        |
| 10  | 2   | 43068004 | PLUG, SOCH, G1/8                         |          |
| 11  | 1   | 81400131 | PLUNGER, SC, 7MPa, 25B, LH               |          |
| 12  | 1   | 81400151 | CAP, LC/SC, 7MPa, 25B                    |          |
| 13  | 4   | 81400200 | PLUG, MANIFOLD, 7MPa, M6                 |          |
| 14  | 3   | 81400202 | PIN, STOP, BALL, METRIC, 4mm BALL        | X        |
| N/A | N/A | L6014250 | KIT, SEAL, SC, 7MPa, 25B                 | NOTED    |



|                     |  |       |
|---------------------|--|-------|
| <b>PARTS LIST</b>   |  |       |
|                     | VEKTEK, INC.<br>1334 E. SIXTH AVE. P.O. BOX 625<br>EMPORIA, KS. 66801 U.S.A. |       |
| ASSEMBLIES AFFECTED | PARTS LIST, ASSY, SC, BF, 7MPa, 25B, LH                                      |       |
| L1412500L           | *****  |       |
| SIZE A              | LPL1412  | REV B |

|                   |  |                |            |          |
|-------------------|--|----------------|------------|----------|
| B                 | 3273   | RELEASE        | JDW        | 08/15/18 |
| REV               | IN ACCORDANCE WITH ECN                       | EFFECTIVE DATE | REVISED BY | DATE     |
| DRW BY: QMITCHELL | <b>DRAWING STATUS: Released</b>              |                |            |          |
| DATE: 7-17-13     | PRODUCTION APPROVED FOR RELEASED STATUS ONLY |                |            |          |