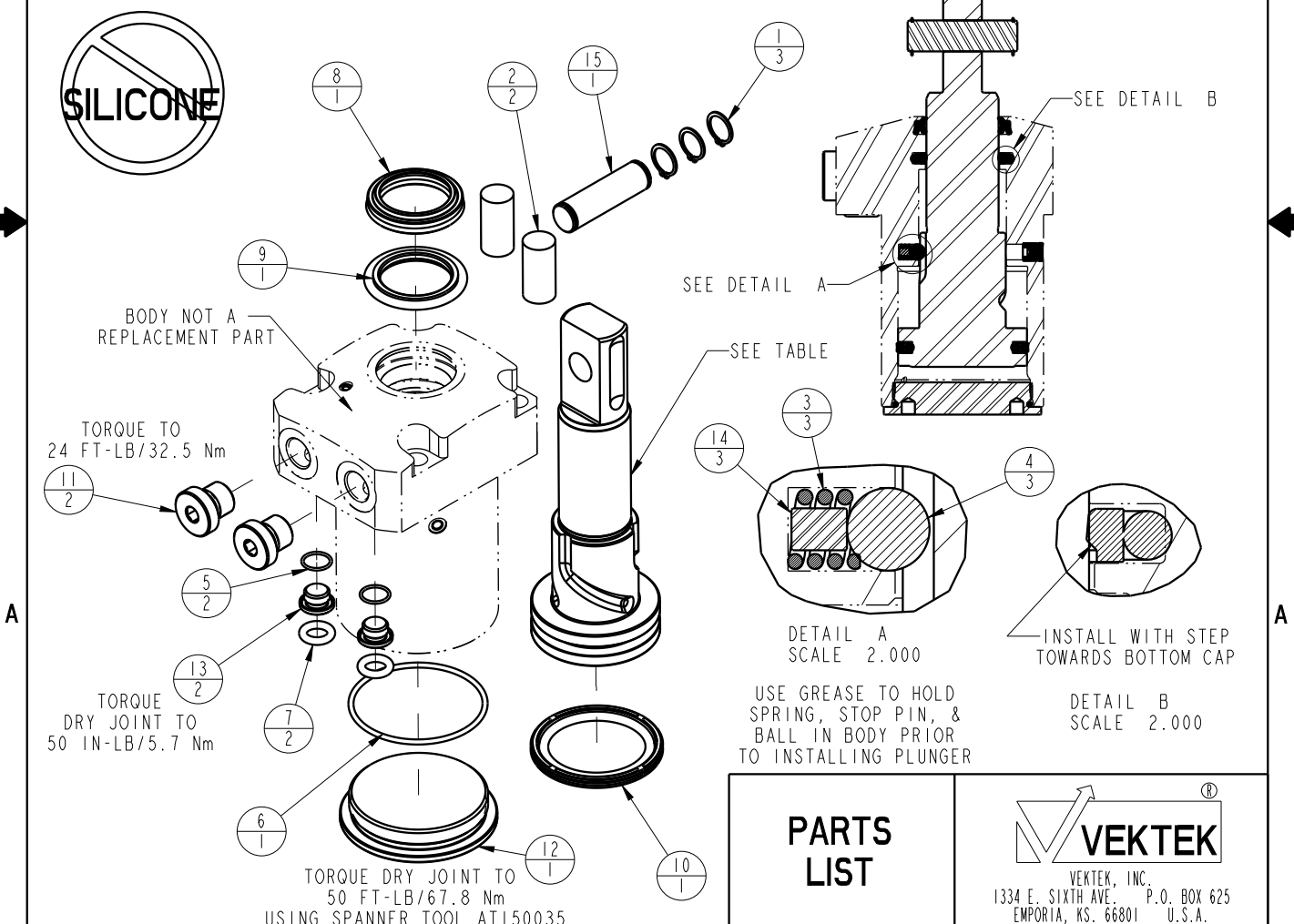


ASSEMBLED MODEL NO.	PLUNGER PART NO.	CAM STYLE	ASSEMBLED ORIENTATION	NO	QTY	PART NO	DESCRIPTION	SEAL KIT	CLEVIS PIN KIT
LI-4050-10-S-0	81400214	STR	0	1	3	23050038	RING, RTNG, EXT, 0.469		X
LI-4050-10-S-60			60	2	2	23340004	STOCK, CORD, .50 X 1.00, 50, NBR		X
LI-4050-10-S-120			120	3	3	23350086	SPRING, COMPRESSION	X	
LI-4050-10-S-30	81400244	STR	30	4	3	23650010	BALL, TUNGSTEN-CARBIDE, 6mm	X	
LI-4050-10-S-90			90	5	2	39051080	O-RING, (10mm X 1)	X	
LI-4050-10-S-150			150	6	1	39051084	O-RING, (50mm X 2)	X	
LI-4050-10-L-0	81400224	LH	0	7	2	39051088	O-RING, (8mm X 3)	X	
LI-4050-10-L-60			60	8	1	39053045	SEAL, WIPER, SNAP IN, WED, 28, 94A, AU	X	
LI-4050-10-L-120			120	9	1	39056005	SEAL, STEP, ROD, 28	X	
LI-4050-10-L-30	81400254	LH	30	10	1	39056024	SEAL, CAP, PISTON, 50, 90A, AU GRPHT FLD	X	
LI-4050-10-L-90			90	11	2	43068006	PLUG, PORT, HOLLOW HEX, G1/4		
LI-4050-10-L-150			150	12	1	81400154	CAP, LC/SC, 7MPa, 50B		
LI-4050-10-R-0	81400234	RH	0	13	2	81400201	PLUG, MANIFOLD, 7MPa, M10		
LI-4050-10-R-60			60	14	3	81400203	PIN, STOP, BALL, METRIC, 6mm BALL	X	
LI-4050-10-R-120			120	15	1	81400274	PIN, ROCKER, SC, 7MPa, 50B		X
LI-4050-10-R-30	81400264	RH	30	N/A	N/A	L6014500	KIT, SEAL, SC, 7MPa, 50B	NOTED	N/A
LI-4050-10-R-90			90	N/A	N/A	L6214500	KIT, CLEVIS PIN, SC, 7MPa, 50B	N/A	NOTED
LI-4050-10-R-150			150						



PARTS LIST ASSEMBLIES AFFECTED SEE ASSEMBLY MODEL NO. TABLE ABOVE	 VEKTEK, INC. 1334 E. SIXTH AVE. EMPORIA, KS. 66801 P.O. BOX 625 U.S.A.
	PARTS LIST, ASSY, SC, TF, 7MPa, 50B, CLEVIS SIZE A: LPL1427 REV B

B	3273	RELEASE	JDW	08/15/18
REV	IN ACCORDANCE WITH ECN	EFFECTIVE DATE	REVISED BY	DATE
DRW BY: MAJ	DRAWING STATUS: Released			
DATE: 4-16-15	PRODUCTION APPROVED FOR RELEASED STATUS ONLY			