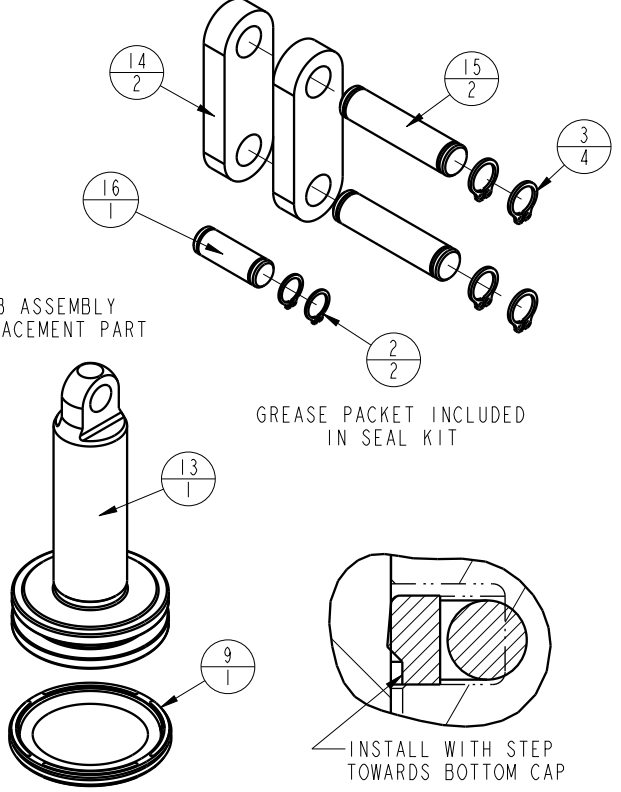
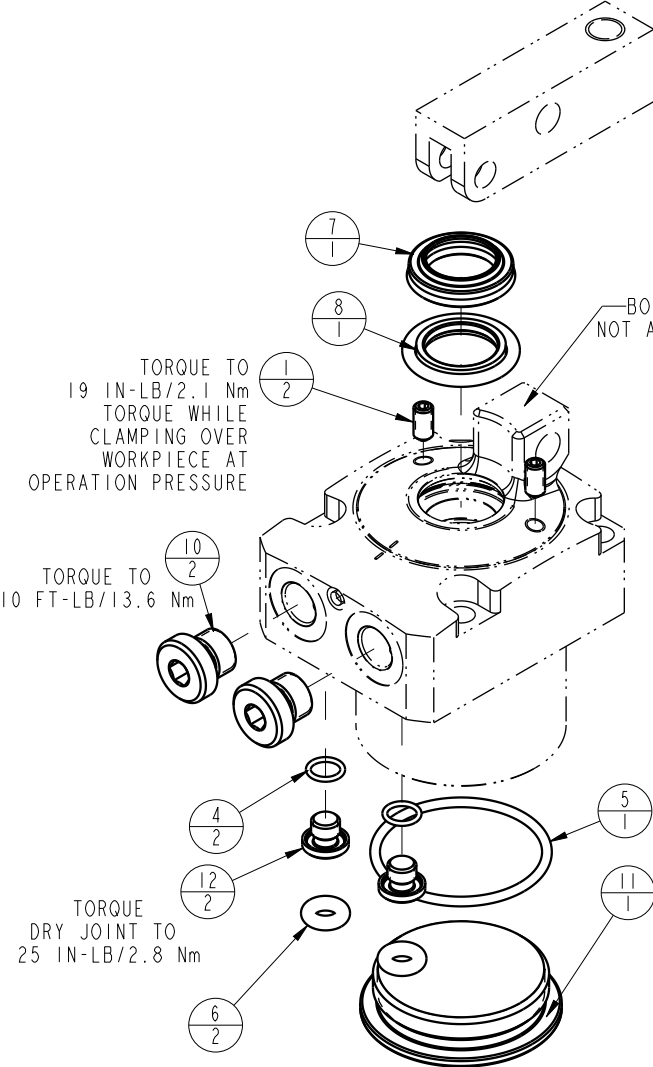



NO	QTY	PART NO	DESCRIPTION	SEAL KIT
1	2	21500317	SCREW, SET, CUP PT, M4 X .7 X 8	
2	2	23050032	RING, RTNG, EXT, 0.236	X
3	4	23050033	RING, RTNG, EXT, 0.276	X
4	2	39051079	O-RING, (6mm X 1)	X
5	1	39051082	O-RING, (33mm X 2)	X
6	2	39051087	O-RING, (4mm X 3)	X
7	1	39053041	SEAL, WIPER, SNAP IN, WED, 15, 94A, AU	X
8	1	39056001	SEAL, STEP, ROD, 15	X
9	1	39056012	SEAL, CAP, PISTON, 32, 94A, AU	X
10	2	43068004	PLUG, SOCH, G1/8	
11	1	81400152	CAP, LC/SC, 7MPa, 32B	
12	2	81400200	PLUG, MANIFOLD, 7MPa, M6	
13	1	81600141	PLUNGER, LC, 7MPa, 32B	
14	2	81600146	LINK, LC, 7MPa, 32B	
15	2	81600151	PIN, LINK, LC, 7MPa, 32B	
16	1	81600156	PIN, PLUNGER, LC, 7MPa, 32B	
N/A	N/A	L6016320	KIT, SEAL, LC, 7MPa, 32B	NOTED



PARTS LIST	 VEKTEK VEKTEK, INC. 1334 E. SIXTH AVE. P.O. BOX 625 EMPORIA, KS. 66801 U.S.A.	
	ASSEMBLIES AFFECTED L1603200	PARTS LIST, ASSY, LC, 7MPa, 32B ROTARY LUG
DATE: 7-16-13	DRAWING STATUS: Released PRODUCTION APPROVED FOR RELEASED STATUS ONLY	SIZE A LPL1601

C	3273	RELEASE	JDW	08/15/18
REV	IN ACCORDANCE WITH ECN	EFFECTIVE DATE	REVISED BY	DATE