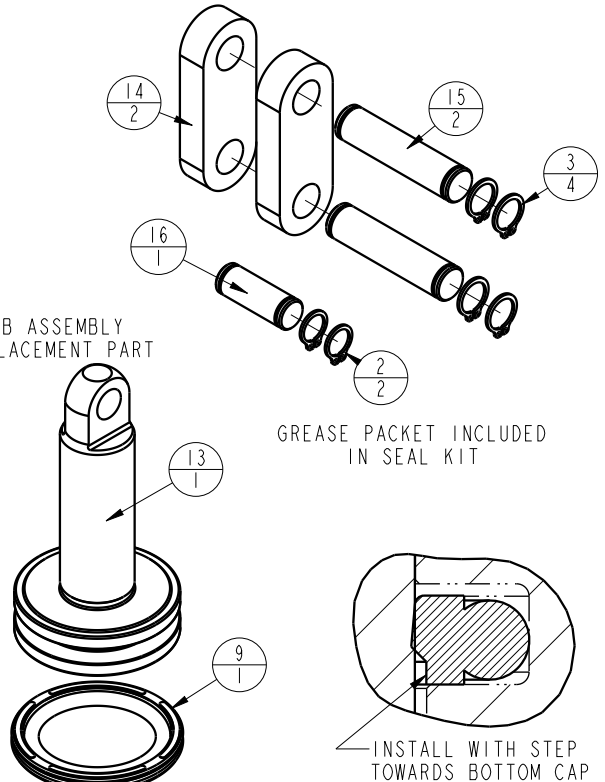
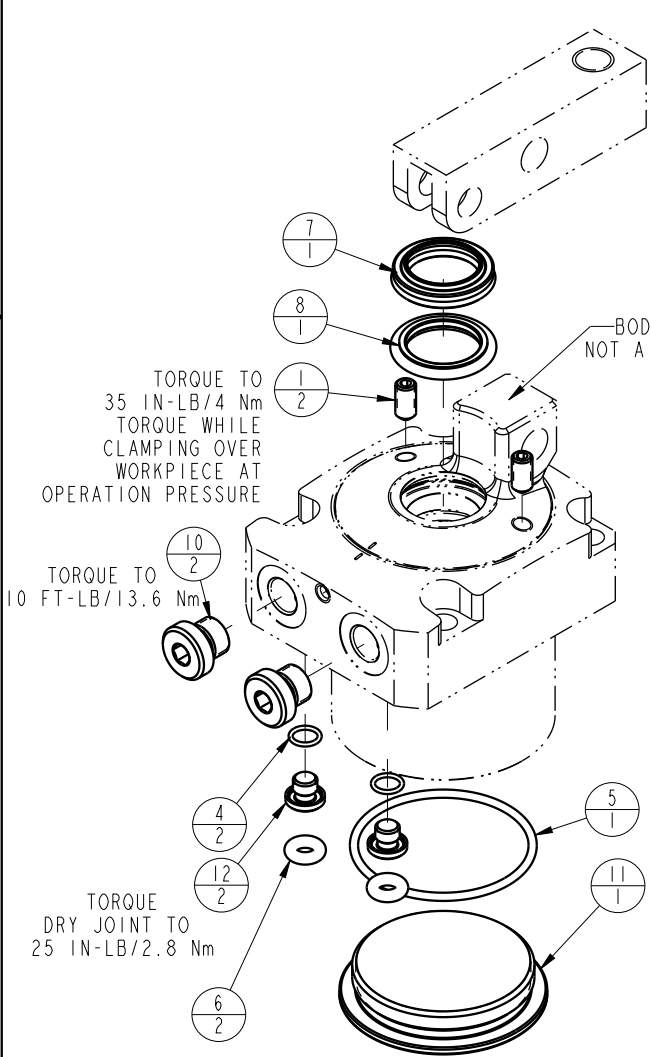



NO	QTY	PART NO	DESCRIPTION	SEAL KIT
1	2	21500318	SCREW, SET, CUP PT, M5 X .8 X 10	
2	2	23050034	RING, RTNG, EXT, 0.312	X
3	4	23050035	RING, RTNG, EXT, 0.354	X
4	2	39051079	O-RING, (6mm X 1)	X
5	1	39051083	O-RING, (41mm X 2)	X
6	2	39051087	O-RING, (4mm X 3)	X
7	1	39053042	SEAL, WIPER, SNAP IN, WED, 18, 94A, AU	X
8	1	39056002	SEAL, STEP, ROD, 18	X
9	1	39056013	SEAL, CAP, PISTON, 40, 94A, AU	X
10	2	43068004	PLUG, SOCH, G1/8	
11	1	81400153	CAP, LC/SC, 7MPα, 40B	
12	2	81400200	PLUG, MANIFOLD, 7MPα, M6	
13	1	81600142	PLUNGER, LC, 7MPα, 40B	
14	2	81600147	LINK, LC, 7MPα, 40B	
15	2	81600152	PIN, LINK, LC, 7MPα, 40B	
16	1	81600157	PIN, PLUNGER, LC, 7MPα, 40B	
N/A	N/A	L6016400	KIT, SEAL, LC, 7MPα, 40B	NOTED



TORQUE DRY JOINT TO 30 FT-LB/40.0 Nm USING SPANNER TOOL AT150034

DETAIL A
SCALE 4.000

PARTS LIST	 VEKTEK, INC. 1334 E. SIXTH AVE. P.O. BOX 625 EMPORIA, KS. 66801 U.S.A.	
	ASSEMBLIES AFFECTED L1604000	PARTS LIST, ASSY, LC, 7MPα, 40B ROTARY LUG
SIZE A	LPL1602	REV C

C	3273	RELEASE	JDW	08/15/18
REV	IN ACCORDANCE WITH ECN	EFFECTIVE DATE	REVISED BY	DATE
DRW BY:	QMITCHELL	DRAWING STATUS: Released		
DATE:	7-16-13	PRODUCTION APPROVED FOR RELEASED STATUS ONLY		