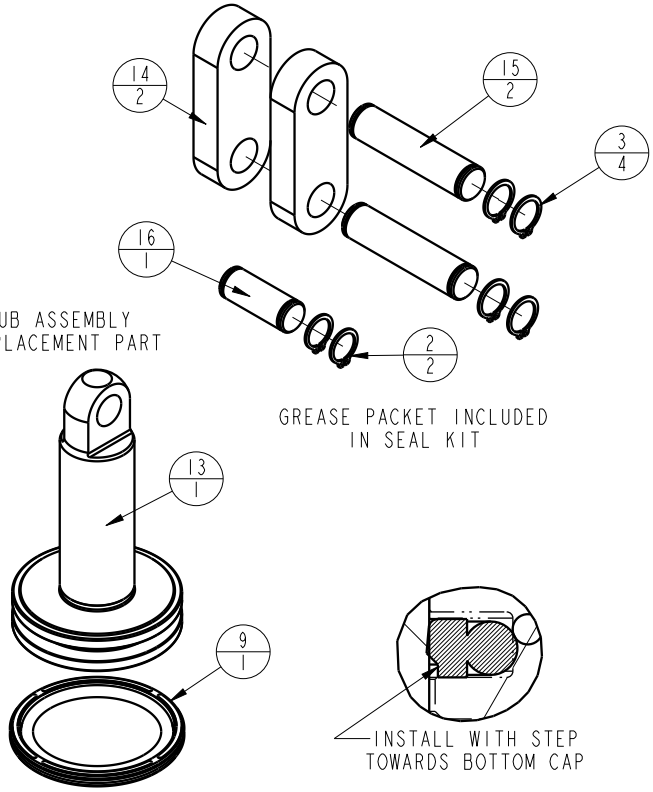
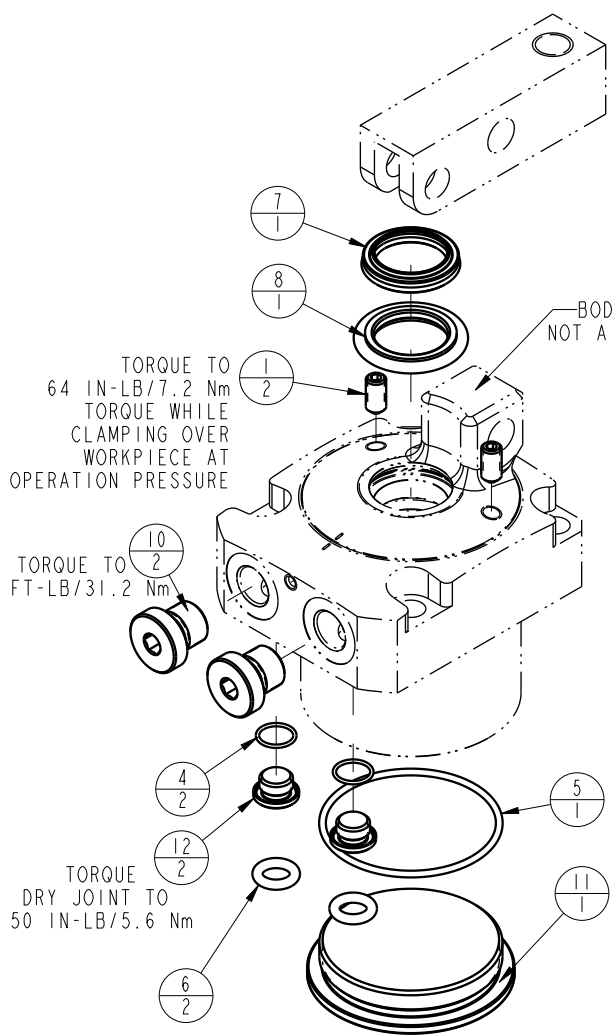



NO	QTY	PART NO	DESCRIPTION	SEAL KIT
1	2	21500319	SCREW, SET, CUP PT, M6 X 1 X 12	
2	2	23050036	RING, RTNG, EXT, 0.394	X
3	4	23050037	RING, RTNG, EXT, 0.438	X
4	2	39051080	O-RING, (10mm X 1)	X
5	1	39051084	O-RING, (50mm X 2)	X
6	2	39051088	O-RING, (8mm X 3)	X
7	1	39053043	SEAL, WIPER, SNAP IN, WED, 22, 94A, AU	X
8	1	39056003	SEAL, STEP, ROD, 22	X
9	1	39056014	SEAL, CAP, PISTON, 50, 94A, AU	X
10	2	43068006	PLUG, PORT, HOLLOW HEX, G1/4	
11	1	81400154	CAP, LC/SC, 7MPa, 50B	
12	2	81400201	PLUG, MANIFOLD, 7MPa, M10	
13	1	81600143	PLUNGER, LC, 7MPa, 50B	
14	2	81600148	LINK, LC, 7MPa, 50B	
15	2	81600153	PIN, LINK, LC, 7MPa, 50B	
16	1	81600158	PIN, PLUNGER, LC, 7MPa, 50B	
N/A	N/A	L6016500	KIT, SEAL, LC, 7MPa, 50B	NOTED



PARTS LIST	 VEKTEK, INC. 1334 E. SIXTH AVE. P.O. BOX 625 EMPORIA, KS. 66801 U.S.A.	
	ASSEMBLIES AFFECTED L1605000	PARTS LIST, ASSY, LC, 7MPa, 50B ROTARY LUG
DATE: 7-16-13	DRAWING STATUS: Released PRODUCTION APPROVED FOR RELEASED STATUS ONLY	SIZE A LPL1603 REV C

C	3273	RELEASE	JDW	08/15/18
REV	IN ACCORDANCE WITH ECN	EFFECTIVE DATE	REVISED BY	DATE