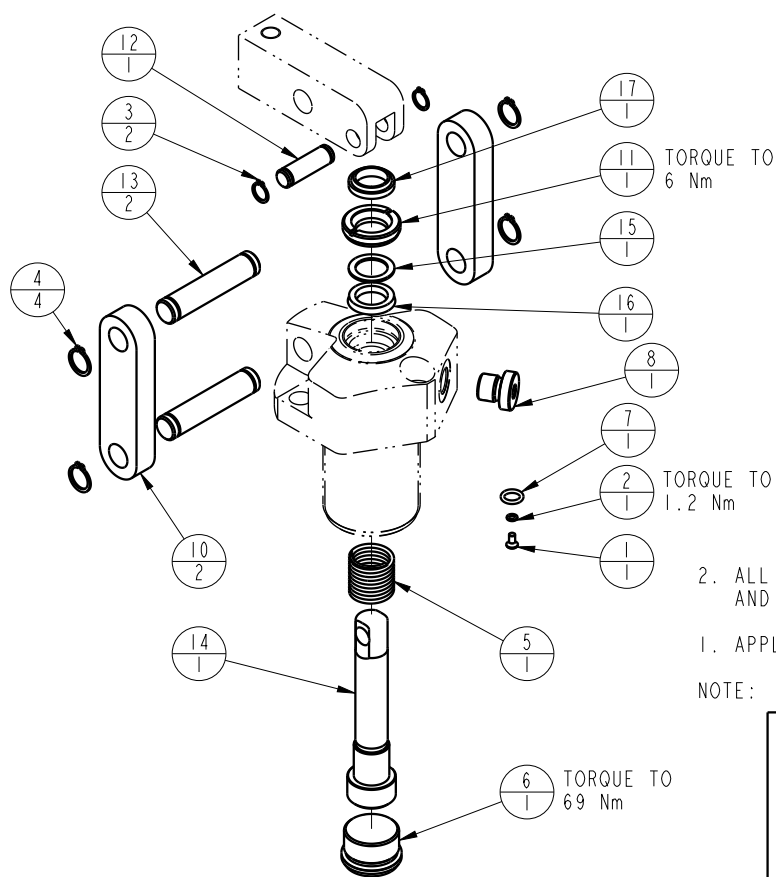


1		2			
MODEL NO.		MODEL NAME			
41661090		ASSY, LC, SA, 6 KN			
NO.	QTY	PART NO.	DESCRIPTION	STD SEAL KIT	FKM SEAL KIT
1	1	21500019	SCREW, CAP, BTNH, M3 X 6, ALY		
2	1	21500200	WASHER		
3	2	23050022	RING, RTNG, EXT, 0.375	X	X
4	4	23050023	RING, RTNG, EXT, 0.500	X	X
5	1	23350050	SPRING, COMPRESSION		
6	1	30670003	PLUG, SAE 12, FKM	X	X
7	1	39050042	O-RING, (-O11)	X	39051025
8	1	43068006	PLUG, PORT, HOLLOW HEX, G1/4		
9	1	67040065	TAG, LINK ASSY, LC		
10	2	81600023	LINK, LC, 2600 1b		
11	1	81600038	RETAINER, LC, 2600		
12	1	81600078	PIN, LC, SHORT, 2600		
13	2	81600083	PIN, LC, LONG, 2600		
14	1	81600114	PLUNGER, LC, SA, 1300/6 KN		
15	1	39F54001	BU RING, (-208 CUSTOM)	X	X
16	1	39H52041	SEAL, BEVEL, 5/8 x 1/8 x 7/8	X	39V52033
17	1	39V53027	WIPER, SNAP-IN, (5/8)	X	X
N/A	N/A	60160013	KIT, SEAL, LC, SA, 1300/6 KN	NOTED	
N/A	N/A	6V160013	KIT, SEAL, LC, SA, 1300/6 KN, FKM		NOTED



2. ALL SEALS, BU RINGS, RETAINING RINGS, O-RINGS, AND PLUGS ARE INCLUDED IN THE SEAL KIT.
1. APPLY LUBRICANT TO ALL SEALS PRIOR TO ASSEMBLY.
- NOTE:

PARTS LIST		
	VEKTEK, INC. 1334 E. SIXTH AVE. P.O. BOX 625 EMPORIA, KS. 66801 U.S.A.	
ASSEMBLIES AFFECTED	PARTS LIST, LC, SA, 6 KN	
41-6610-90	SIZE A	REV D

D	5718	RELEASE	NPETERS	6/9/25
REV	IN ACCORDANCE WITH ECN	EFFECTIVE DATE	REVISED BY	DATE
DRW BY: K. ROEMER	DRAWING STATUS: Released			
DATE: 08/23/06	PRODUCTION APPROVED FOR RELEASED STATUS ONLY			