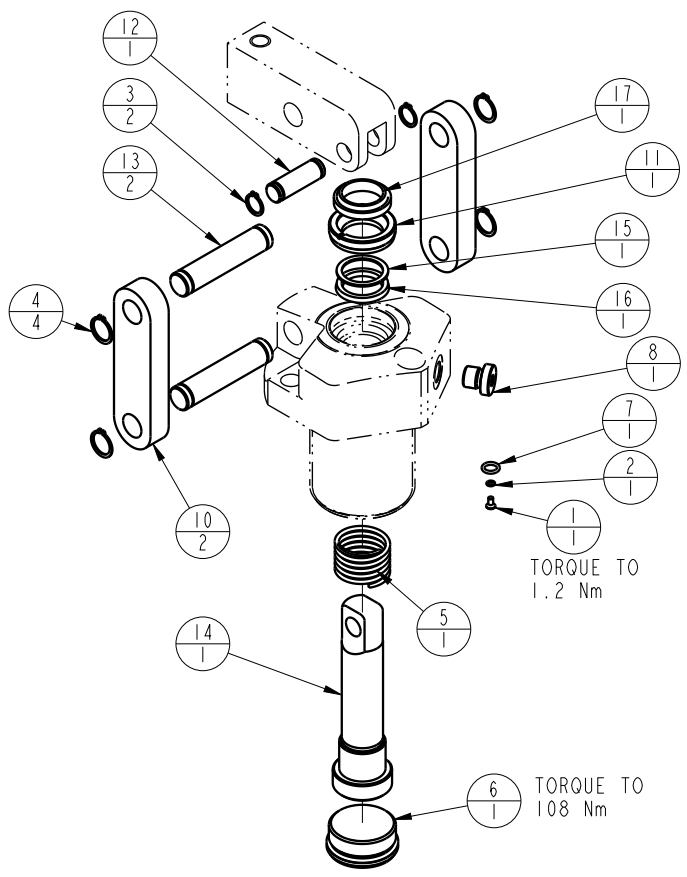



1		2			
MODEL NO.		MODEL NAME			
41661140		ASSY, LC, SA, 13 KN			
NO.	QTY	PART NO.	DESCRIPTION	STD SEAL KIT	FKM SEAL KIT
1	1	21500019	SCREW, CAP, BTNH, M3 X 6, ALY		
2	1	21500200	WASHER		
3	2	23050023	RING, RTNG, EXT, 0.500	X	X
4	4	23050024	RING, RTNG, EXT, 0.625	X	X
5	1	23350051	SPRING, COMPRESSION		
6	1	30670004	PLUG, SAE 20, FKM	X	X
7	1	39050042	O-RING, (-011)	X	39051025
8	1	43068006	PLUG, PORT, HOLLOW HEX, G1/4		
9	1	67040065	TAG, LINK ASSY, LC		
10	2	81600024	LINK, LC, 5000 lb		
11	1	81600039	RETAINER, LC, 5000		
12	1	81600079	PIN, LC, SHORT, 5000		
13	2	81600084	PIN, LC, LONG, 5000		
14	1	81600115	PLUNGER, LC, SA, 3000/13 KN		
15	1	39F54007	BU RING,(-214)	X	X
16	1	39H52042	SEAL, BEVEL, 1 x 1/8 x 1-1/4	X	39V52034
17	1	39V53029	WIPER, SNAP-IN, (1)	X	X
N/A	N/A	60-1600-14	KIT, SEAL, LC, SA, 3000/13 KN	NOTED	
N/A	N/A	6V-1600-14	KIT, SEAL, LC, SA, 3000/13 KN, FKM		NOTED



2. ALL SEALS, BU RINGS, RETAINING RINGS, O-RINGS, AND PLUGS ARE INCLUDED IN THE SEAL KIT.

1. APPLY LUBRICANT TO ALL SEALS PRIOR TO ASSEMBLY.

NOTE:

<b>PARTS LIST</b>	 VEKTEK, INC. 1334 E. SIXTH AVE. P.O. BOX 625 EMPORIA, KS. 66801 U.S.A.	
	ASSEMBLIES AFFECTED	<b>PARTS LIST, LC, SA, 13 KN</b>
41-6611-40	SIZE A	REV D

D	5718	RELEASE	NPETERS	6/9/25
REV	IN ACCORDANCE WITH ECN	EFFECTIVE DATE	REVISED BY	DATE
DRW BY:	K. ROEMER	<b>DRAWING STATUS: Released</b>		
DATE:	08/23/06	PRODUCTION APPROVED FOR RELEASED STATUS ONLY		