

NO	QTY	PART NO	DESCRIPTION	STD SEAL KIT
1	2	21500320	SCREW, SET, CUP PT, M8 X 1.25 X 14	
2	4	23050023	RING, RTNG, EXT, 0.500	X
3	2	23050038	RING, RTNG, EXT, 0.469	X
4	1	23350132	SPRING, COMPRESSION	
5	1	39051088	O-RING, (8mm X 3)	X
6	1	39051152	O-RING, (34mm X 2)	X
7	1	39052068	SEAL, ROD, RSB, 28, 85A, AU	X
8	1	39053045	SEAL, WIPER, SNAP IN, WED, 28, 94A, AU	X
9	1	43061122	PLUG, SOCH, METRIC, M8	
10	1	43068006	PLUG, PORT, HOLLOW HEX, G1/4	
11	2	81600149	LINK, LC, 7MPa, 63B	
12	2	81600154	PIN, LINK, LC, 7MPa, 63B	
13	1	81600159	PIN, PLUNGER, LC, 7MPa, 63B	
14	1	81600264	PLUNGER, LC, TL360, SA, 3600/15.9kN	
15	1	81600274	CAP, LC, TL360, 3600/15.9kN	
N/A	N/A	60160304	KIT, SEAL, ASSY, LC, TL360, SA, 15.9kN	NOTED

TORQUE TO 13.5 FT-LB/17 Nm
TORQUE WHILE CLAMPING OVER WORKPIECE AT OPERATING PRESSURE

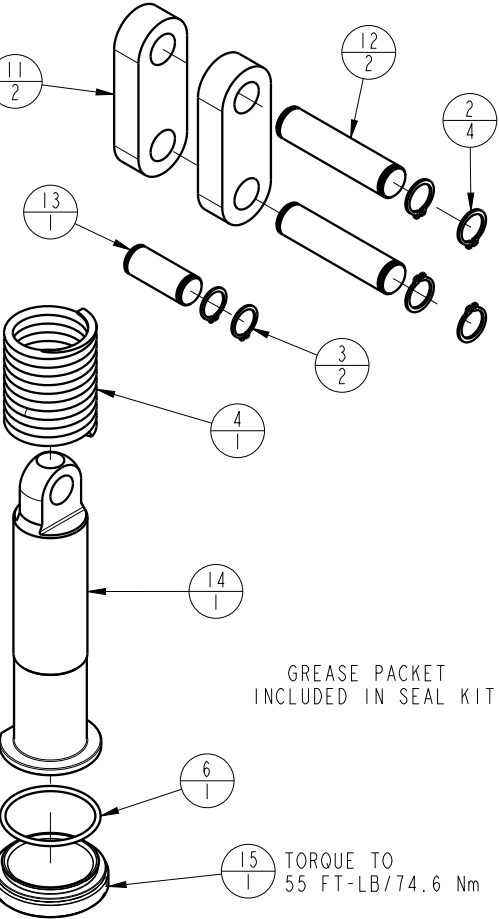
TORQUE TO 23 FT-LB/31.2 Nm


TORQUE TO 2 FT-LB/2.7 Nm

BODY SUB ASSEMBLY NOT A REPLACEMENT PART

GREASE PACKET INCLUDED IN SEAL KIT

TORQUE TO 55 FT-LB/74.6 Nm



PARTS LIST	 VEKTEK VEKTEK, INC. 1334 E. SIXTH AVE. P.O. BOX 625 EMPORIA, KS. 66801 U.S.A.	
	PARTS LIST, ASSY, LC, TL360, SA, 15.9kN ROTARY LUG	
ASSEMBLIES AFFECTED 41-6128-00	SIZE A	MPL1618
		REV A

A	3076	RELEASE	BCD	08/22/16
REV	IN ACCORDANCE WITH ECN	EFFECTIVE DATE	REVISED BY	DATE
DRW BY:	BCD	DRAWING STATUS: Released PRODUCTION APPROVED FOR RELEASED STATUS ONLY		
DATE:	07/20/16			