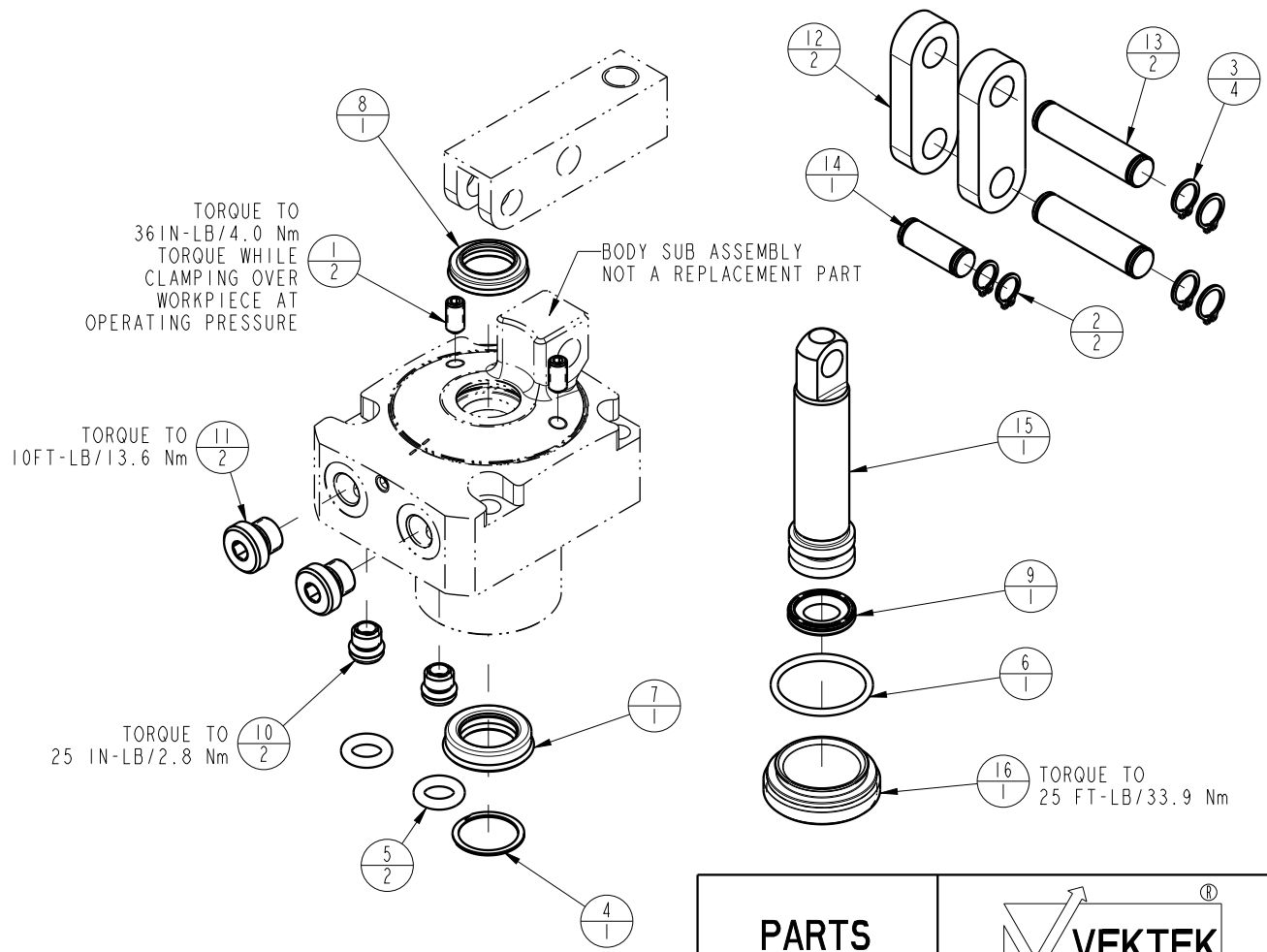



NO	QTY	PART NO	DESCRIPTION	STD SEAL KIT
1	2	21500318	SCREW, SET, CUP PT, M5 X .8 X 10	
2	2	23050034	RING, RTNG, EXT, 0.312	X
3	4	23050035	RING, RTNG, EXT, 0.354	X
4	1	23050051	RETAINING RING, SPIRAL, INTL	X
5	2	39051088	O-RING, (8mm X 3)	X
6	1	39051150	O-RING, (24mm X 2)	X
7	1	39052060	SEAL, ROD, RSD, 15, 85A, AU	X
8	1	39053041	SEAL, WIPER, SNAP IN, WED, 15, 94A, AU	X
9	1	39056032	SEAL, CAP, PISTON, 18, 94A, AU	X
10	2	43061122	PLUG, SOCH, METRIC, M8	
11	2	43068004	PLUG, SOCH, G1/8	
12	2	81600147	LINK, LC, 7MPa, 40B	
13	2	81600152	PIN, LINK, LC, 7MPa, 40B	
14	1	81600157	PIN, PLUNGER, LC, 7MPa, 40B	
15	1	81600252	PLUNGER, LC, TL360, DA, 1400/6.22kN	
16	1	81600272	CAP, LC, TL360, 1400/6.22kN	
N/A	N/A	60160502	KIT, SEAL, ASSY, LC, TL360, DA, 6.22kN	NOTED



PARTS LIST	 VEKTEK VEKTEK, INC. 1334 E. SIXTH AVE. P.O. BOX 625 EMPORIA, KS. 66801 U.S.A.	
	PARTS LIST, ASSY, LC, TL360, DA, 6.22kN ROTARY LUG	
ASSEMBLIES AFFECTED 41-6218-00	SIZE A	MPL1621 REV A

A	N/A	RELEASE	BCD	08/22/16
REV	IN ACCORDANCE WITH ECN	EFFECTIVE DATE	REVISED BY	DATE
DRW BY: BCD	DRAWING STATUS: Released PRODUCTION APPROVED FOR RELEASED STATUS ONLY			
DATE: 07-15-16				