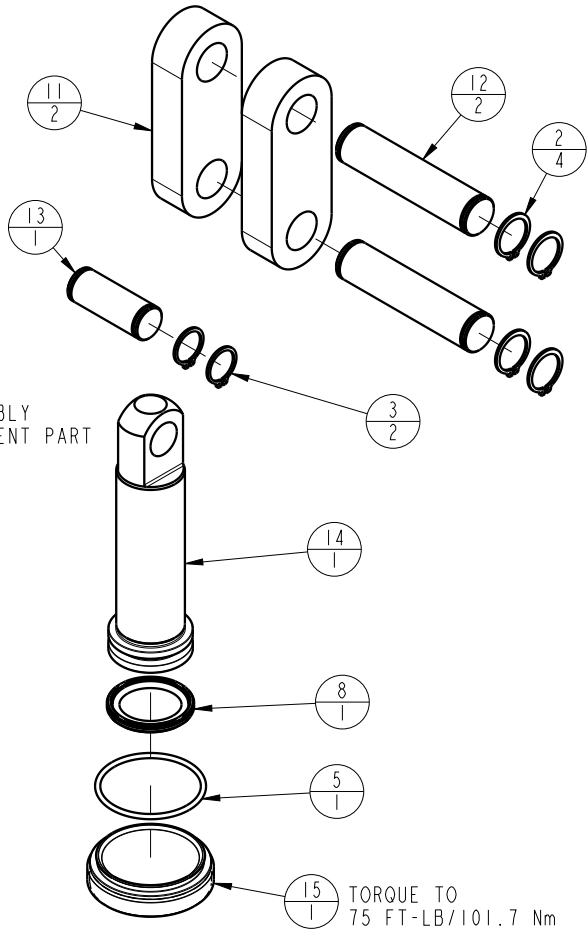
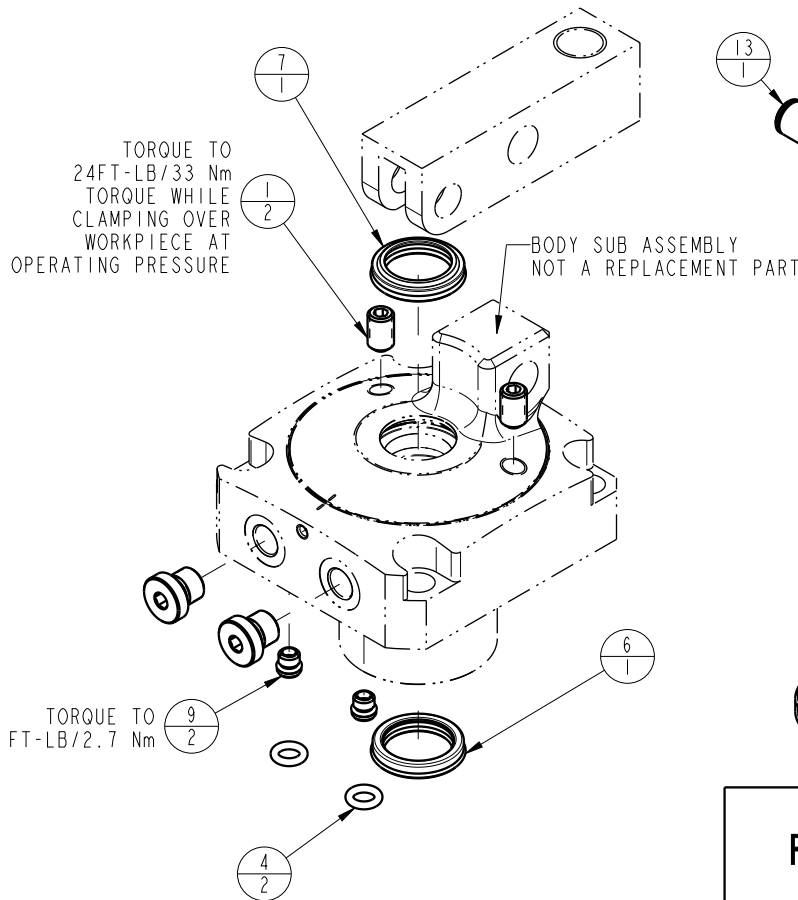



NO	QTY	PART NO	DESCRIPTION	STD SEAL KIT
1	2	21500331	SCREW, SET, CUP PT, M10 X 1.5 X 16	
2	4	23050024	RING, RTNG, EXT, 0.625	X
3	2	23050048	RING, RTNG, EXT, 0.551	X
4	2	39051088	O-RING, (8mm X 3)	X
5	1	39051153	O-RING, (38mm X 2)	X
6	1	39052063	SEAL, ROD, RSD, 26, 85A, AU	X
7	1	39053044	SEAL, WIPER, SNAP IN, WED, 26, 94A, AU	X
8	1	39056012	SEAL, CAP, PISTON, 32, 94A, AU	X
9	2	43061122	PLUG, SOCH, METRIC, M8	
10	2	43068006	PLUG, PORT, HOLLOW HEX, G1/4	
11	2	81600171	LINK, LC, TL360, 5000/22.3kN	
12	2	81600172	PIN, LINK, LC, TL360, 5000/22.3kN	
13	1	81600173	PIN, PLUNGER, LC, TL360, 5000/22.3kN	
14	1	81600255	PLUNGER, LC, TL360, DA, 5000/22.3kN	
15	1	81600275	CAP, LC, TL360, 5000/22.3kN	
N/A	N/A	60160505	KIT, SEAL, ASSY, LC, TL360, DA, 22.3kN	NOTED



PARTS LIST	 VEKTEK, INC. 1334 E. SIXTH AVE. P.O. BOX 625 EMPORIA, KS. 66801 U.S.A.
	PARTS LIST, ASSY, LC, TL360, DA, 22.3kN ROTARY LUG SIZE A MPL1624

B	3853	RELEASE	BRI	06/13/19
REV	IN ACCORDANCE WITH ECN	EFFECTIVE DATE	REVISED BY	DATE
DRW BY:	BCD	DRAWING STATUS: Released PRODUCTION APPROVED FOR RELEASED STATUS ONLY		
DATE:	07-15-16			