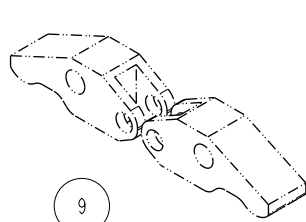
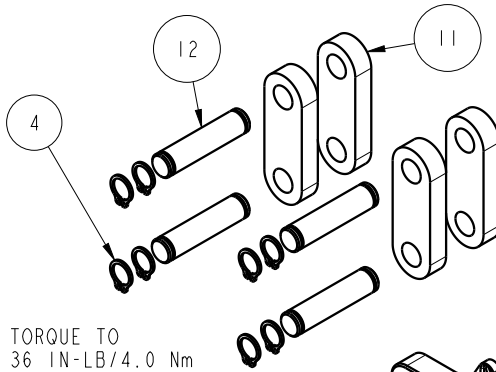
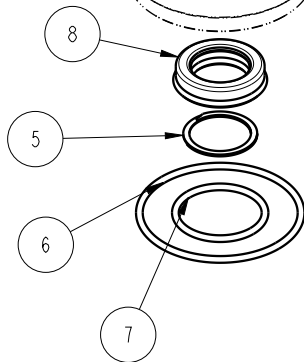
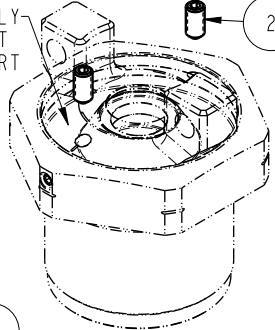


SECTION A-A

NO	QTY	PART NO	DESCRIPTION	STD SEAL KIT
1	2	21500051	SCREW, CAP, BTNH, M3 X 4, SSTL	
2	2	21500318	SCREW, SET, CUP PT, M5 X .8 X 10	
3	4	23050032	RING, RTNG, EXT, 0.236	X
4	8	23050033	RING, RTNG, EXT, 0.276	X
5	1	23050051	RETAINING RING, SPIRAL, INTL	X
6	1	39001021	O-RING, (-030)	X
7	1	39050033	O-RING, (-020)	X
8	1	39052060	SEAL, ROD, RSD, 15, 85A, AU	X
9	1	39053041	SEAL, WIPER, SNAP IN, WED, 15, 94A, AU	X
10	1	39056032	SEAL, CAP, PISTON, 18, 94A, AU	X
11	4	81600146	LINK, LC, 7MPa, 32B	
12	4	81600151	PIN, LINK, LC, 7MPa, 32B	
13	2	81600156	PIN, PLUNGER, LC, 7MPa, 32B	
14	1	81600281	PIVOT, TL360-TWIN, 1700 LB	
15	2	81600284	COVER, PIVOT, TL360-TWIN, 1700 LB	
16	1	81600293	PLUNGER, TL360-TWIN, 1700 LB	
N/A	N/A	60160213	KIT, SEAL,	NOTED



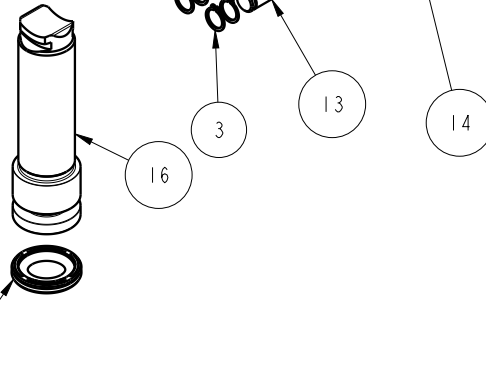
BODY SUB ASSEMBLY  
NOT A REPLACEMENT  
PART



TORQUE TO  
36 IN-LB/4.0 Nm  
TORQUE WHILE  
CLAMPING OVER  
WORKPIECE AT  
OPERATION PRESSURE

GREASE PACKET  
INCLUDED IN SEAL KIT

TORQUE TO  
13 IN-LB/1.48 Nm  
APPLY MEDIUM STRENGTH  
THREAD-LOCKER



**PARTS LIST**



VEKTEK, INC.  
1334 E. SIXTH AVE. P.O. BOX 625  
EMPORIA, KS. 66801 U.S.A.

ASSEMBLIES AFFECTED  
41621840

PARTS LIST, ASSY, LC, CM, TL360-TWIN, DA, 7.56 kW

SIZE  
A MPL1632

REV  
A

SHEET 1 OF 1

A	4723	RELEASE	BDC	7/19/2022
REV	IN ACCORDANCE WITH ECN	EFFECTIVE DATE	REVISED BY	DATE
DRW BY:	BDC	<b>DRAWING STATUS: Released</b>		
DATE:	07/20/22	PRODUCTION APPROVED FOR RELEASED STATUS ONLY		

FORM FEG035\_PL\_ASIZE, REV. B