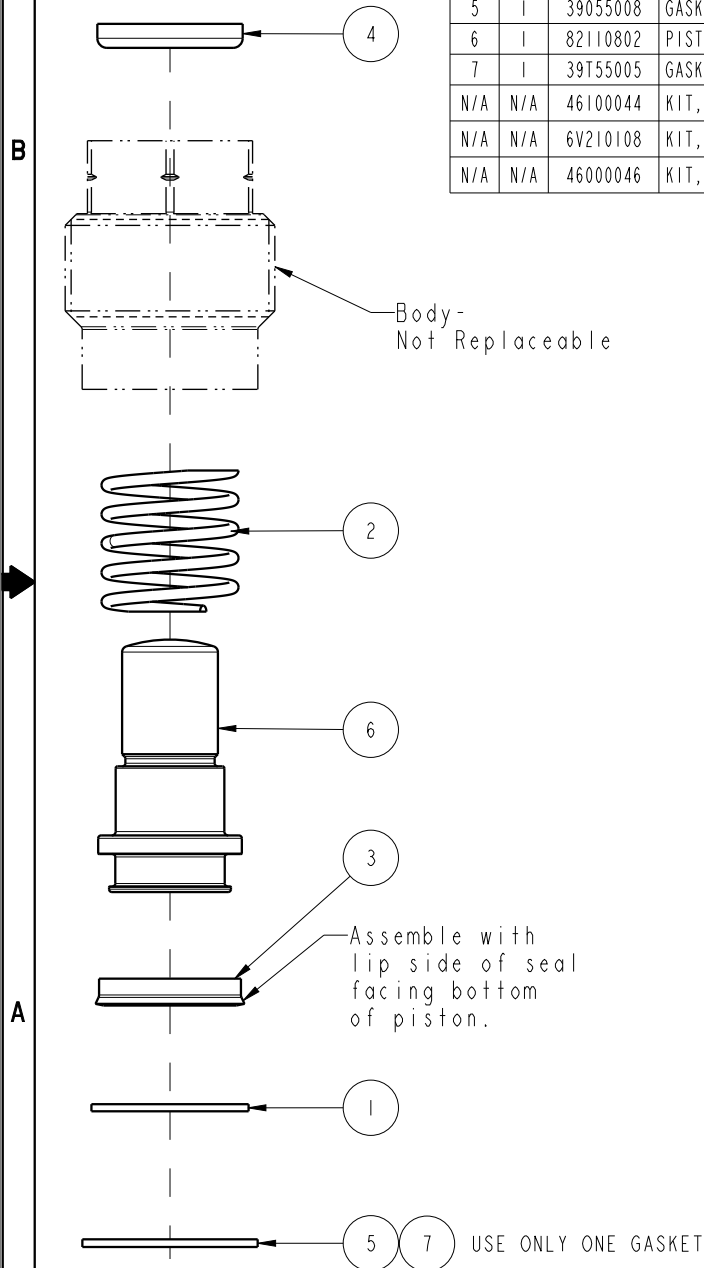


**THIS IS A TWO PAGE PARTS LIST.
THIS FIRST PAGE APPLIES TO
MODEL No. 42-1010-02 AT REVISION G AND LATER REVISIONS**

NO	QTY	PART NO	DESCRIPTION	STD SEAL KIT	FKM SEAL KIT	SPRING KIT
1	1	23050009	WASHER	X	X	X
2	1	23350072	SPRING, COMPRESSION			X
3	1	39010013	SEAL, BEVEL, 9/16 X 3/32 X 3/4	X	39012000	
4	1	39012009	WIPER, PRESS-IN, (1/2)	X	X	
5	1	39055008	GASKET, COPPER	X	X	X
6	1	82110802	PISTON, CYL, CM, 2200, .38 STRK, SA, SPHR			
7	1	39T55005	GASKET, (.753x.080x.080)	X	X	X
N/A	N/A	46100044	KIT, SPRING, CYL, CM, 10KN, 9.5STRK	NOTED	N/A	N/A
N/A	N/A	6V210108	KIT, SEAL, CYL, CM, 2200, SA, FKM	N/A	NOTED	N/A
N/A	N/A	46000046	KIT, SEAL, CYL, CM, 1.1KN	N/A	N/A	NOTED



See ISMV-2100 for machining and installation instructions. Lubricate all seals with clean hydraulic oil prior to assembly.

DO NOT USE SILICONE BASED LUBRICANTS.

INSTALLATION TORQUE:

- Metal Gasket = 68 Nm
- Composite Gasket = 35 Nm
- *Cylinders may need to be re-torqued after a break-in period of 3 weeks or 2,500 cycles for both gasket styles.

Both metal and composite gaskets are supplied. Use only one gasket. The metal gasket is recommended when the cavity seal surface has every smooth finish and is flat and perpendicular to the minor diameter. The metal gasket must be torqued to a higher value, which is more resilient to machining vibrations providing long term sealing. The composite gasket is recommended when the cavity seal surface has a rough surface finish or is not flat.

PARTS LIST



VEKTEK, INC.
1334 E. SIXTH AVE. P.O. BOX 625
EMPORIA, KS. 66801 U.S.A.

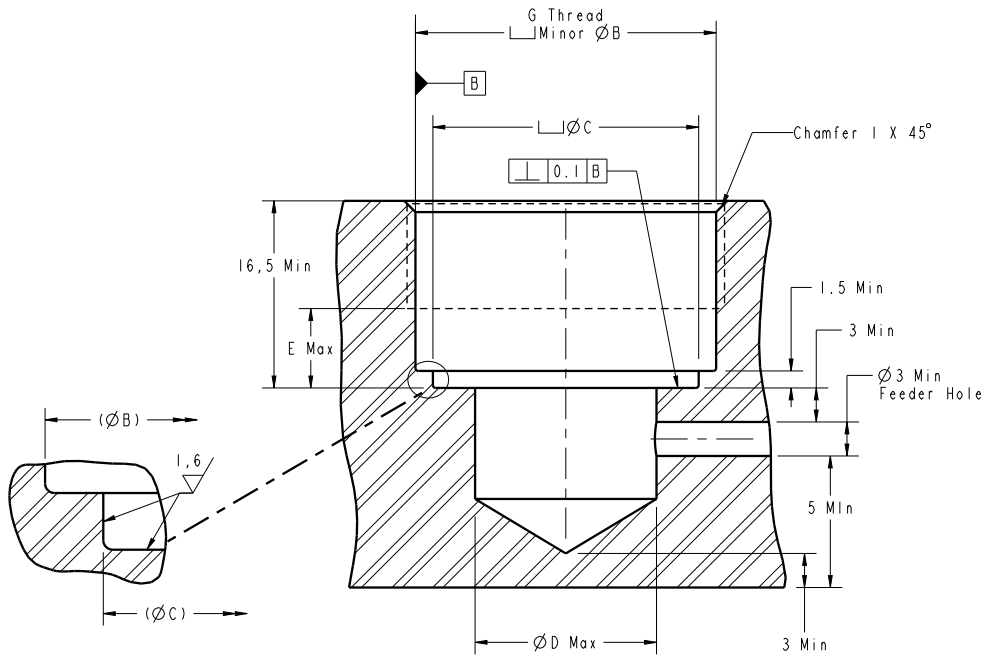
ASSEMBLIES AFFECTED
42-1010-02

PARTS LIST, ASSY, CYL, CM, 10KN, 9.5 STRK, SPHR

SIZE A MPL2106

REV M

M	3140	RELEASE	BCD	11/9/16
REV	IN ACCORDANCE WITH ECN	EFFECTIVE DATE	REVISED BY	DATE
DRW BY:	DRAWING STATUS: Released			
DATE: 8-8-11	PRODUCTION APPROVED FOR RELEASED STATUS ONLY			



Cavity Dimensions (mm)							
Model No.	G	B	C	D	E	Copper Gasket Torque (Nm)	Composite Gasket Torque (Nm)
42-1010-00*	M16x1,5	14,52±0,15	13,84±0.13	8	4	40	20
42-1010-01*	M20x1,5	18,52±0,15	16,81±0.13	9,5	4	54	30
42-1010-02*	M28x1,5	26,52±0,15	23,44±0.13	16	7	68	35
42-1010-03*							
42-1010-04	M35x1,5	33,52±0,15	31,19±0.13	22	7	N/A	50

*Cylinders may need to be re-torqued after a break-in period of 3 weeks or 2,500 cycles for both gasket styles.

INSTALLATION INSTRUCTIONS



VEKTEK, INC.
1334 E. SIXTH AVE. P.O. BOX 625
EMPORIA, KS. 66801 U.S.A.

ASSEMBLIES AFFECTED

Cavity Dimensions

Cartridge Mounted Cylinders

-SEE CHART-

SIZE
A

1SMV2100

REV
B

B	3041	RELEASE	BCD	11/9/16
REV	IN ACCORDANCE WITH ECN	EFFECTIVE DATE	REVISED BY	DATE
DRW BY: JDW	DRAWING STATUS: Released			
DATE: 8-8-11	PRODUCTION APPROVED FOR RELEASED STATUS ONLY			

FORM FEG041-1S.AS1ZE, REV. B

SHEET 1 OF 1