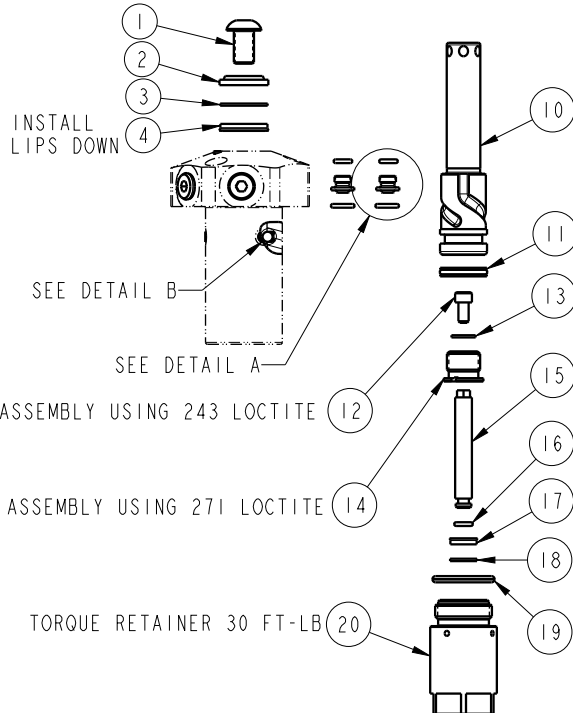
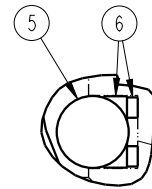


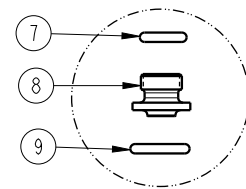
NO.	QTY.	DESCRIPTION	MODEL NUMBER		STANDARD SEAL KIT	FLUOROCARBON SEAL KIT
			14-6209-01-X-PP	14-6213-01-X-PP		
1	1	BUTTON HEAD CAP SCREW	21-4100-09	21-4100-39	NO	NO
2	1	WIPER, ROD (FLUOROCARBON)	39-0530-01	39-0530-00	YES	YES
3	1	BACK-UP RING, ROD	39-F540-01	39-F540-02	YES	YES
4	1	SEAL, ROD (STANDARD)	39-0100-20	39-0110-46	YES	NO
	1	SEAL, ROD (FLUOROCARBON)	39-V100-20	39-V110-46	NO	YES
5	3	BALL, STEEL ALLOY	23-6000-11	23-6000-02	YES	YES
6	3	BALL SEAT ASSEMBLY	90-1999-57	90-1999-58	YES	YES
7	2	O-RING, ADAPTOR (STANDARD)	39-0500-36	39-0500-36	YES	NO
	2	O-RING, ADAPTOR (FLUOROCARBON)	30-0510-24	30-0510-24	NO	YES
8	2	MANIFOLD MOUNT ADAPTOR (STANDARD)	30-8711-20	30-8711-20	YES	NO
	2	MANIFOLD MOUNT ADAPTOR (FLUOROCARBON)	30-8711-20F	30-8711-20F	NO	YES
9	2	O-RING, MANIFOLD (STANDARD)	39-0500-42	39-0500-42	YES	NO
	2	O-RING, MANIFOLD (FLUOROCARBON)	39-0510-25	39-0510-25	NO	YES
10	1	PLUNGER, LEFT HAND (SHOWN)	81-4000-51	81-4000-52	NO	NO
	1	PLUNGER, RIGHT HAND	81-4000-48	81-4000-49	NO	NO
11	1	SEAL, PLUNGER (STANDARD)	39-H100-18	39-H110-30	YES	NO
	1	SEAL, PLUNGER (FLUOROCARBON)	39-V100-18	39-V110-30	NO	YES
12	1	SOCKET HEAD CAP SCREW	21-4100-73	21-4100-73	NO	NO
13	1	WASHER	23-0500-11	23-0500-11	NO	NO
14	1	PLUNGER BUSHING	81-5000-13	81-5000-14	NO	NO
15	1	ROD, ACTUATOR	81-4001-00	81-4001-95	NO	NO
16	1	O-RING, RETAINER BORE (STANDARD)	39-0511-96	39-0511-96	NO	NO
17	1	SEAL, LOWER ROD (FLUOROCARBON)	39-V520-31	39-V520-31	NO	NO
18	1	BACK-UP RING, LOWER ROD	39-F540-05	39-F540-05	NO	NO
19	1	O-RING, RETAINER (FLUOROCARBON)	39-0510-31	39-V510-43	YES	YES
	1	GASKET	N/A	39-T550-03	YES	YES
20	1	RETAINER	81-4000-99	81-4001-94	NO	NO
N/A	N/A	SEAL KIT (STANDARD)	60-1400-26	60-1400-20	INCLUDED IN KIT	
N/A	N/A	SEAL KIT (FLUOROCARBON)	6V-1400-26	6V-1400-20		



\*NOTE: ITEMS INCLUDED IN NO. 8



DETAIL B  
SCALE 2.000



DETAIL A  
SCALE .700



Lubricate all seals with clean hydraulic fluid prior to assembly.

<b>PARTS LIST</b>	
	VEKTEK, INC. 1334 E. SIXTH AVE. P.O. BOX 625 EMPORIA, KS. 66801 U.S.A.
ASSEMBLIES AFFECTED	PARTS LIST, ASSY, SC, HS, BF, 1100, DA, LH, PP
14620901LPP, 14620901RPP	
14621301LPP, 14621301RPP	
SIZE A	PL1459
	REV A

A	5805	RELEASE	ALS	9/11/25
REV	IN ACCORDANCE WITH ECN	EFFECTIVE DATE	REVISED BY	DATE
DRW BY: ALS	<b>DRAWING STATUS: Released</b> PRODUCTION APPROVED FOR RELEASED STATUS ONLY			
DATE: 9/10/25				