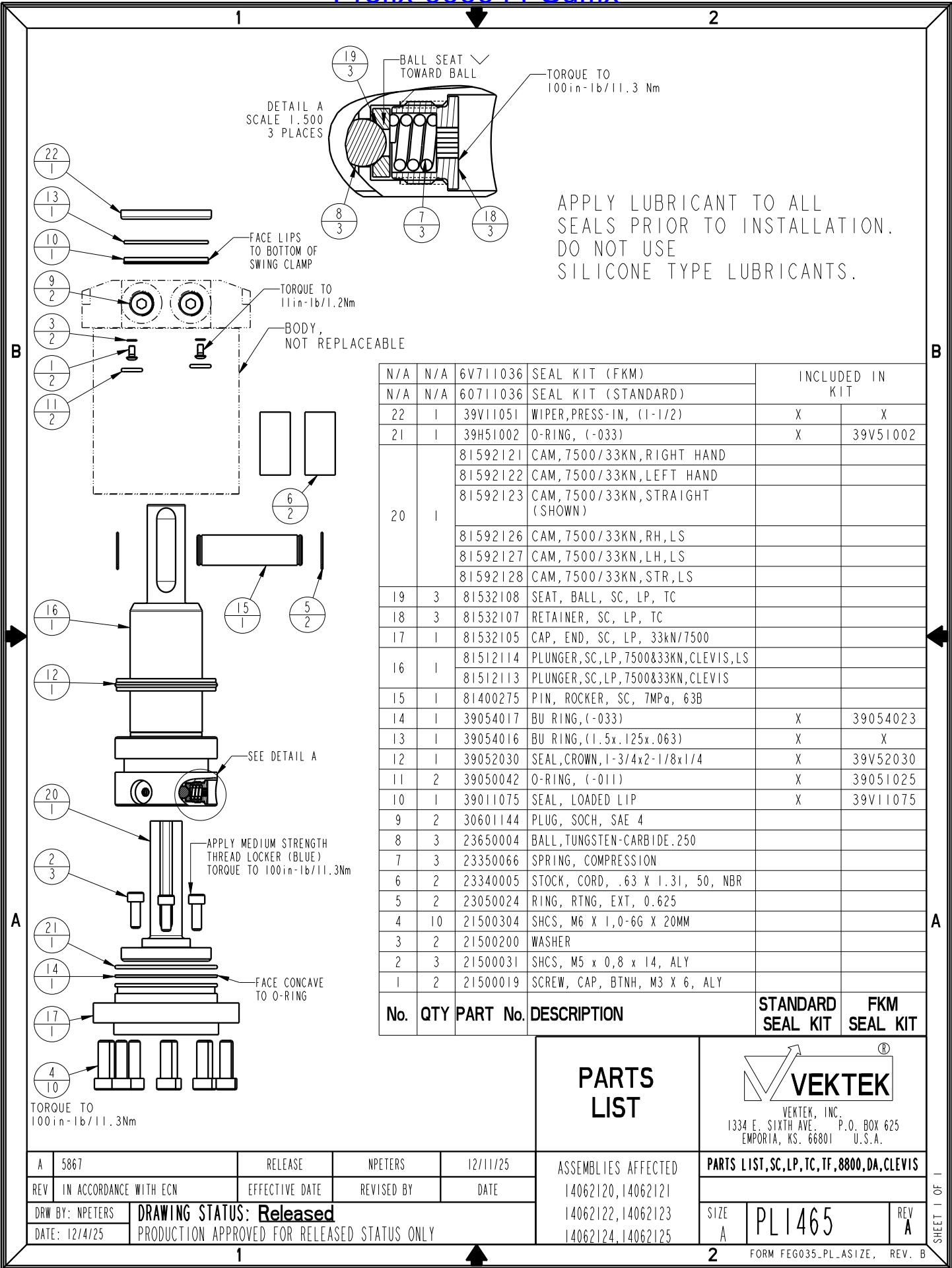


Prefix-000044-Suffix




APPLY LUBRICANT TO ALL SEALS PRIOR TO INSTALLATION. DO NOT USE SILICONE TYPE LUBRICANTS.

No.	QTY	PART No.	DESCRIPTION	STANDARD SEAL KIT	FKM SEAL KIT
N/A	N/A	6V711036	SEAL KIT (FKM)	INCLUDED IN KIT	
N/A	N/A	60711036	SEAL KIT (STANDARD)		
22	1	39V11051	WIPER, PRESS-IN, (1-1/2)	X	X
21	1	39H51002	O-RING, (-033)	X	39V51002
20	1	81592121	CAM, 7500/33KN, RIGHT HAND		
		81592122	CAM, 7500/33KN, LEFT HAND		
		81592123	CAM, 7500/33KN, STRAIGHT (SHOWN)		
		81592126	CAM, 7500/33KN, RH, LS		
		81592127	CAM, 7500/33KN, LH, LS		
		81592128	CAM, 7500/33KN, STR, LS		
19	3	81532108	SEAT, BALL, SC, LP, TC		
18	3	81532107	RETAINER, SC, LP, TC		
17	1	81532105	CAP, END, SC, LP, 33KN/7500		
16	1	81512114	PLUNGER, SC, LP, 7500&33KN, CLEVIS, LS		
		81512113	PLUNGER, SC, LP, 7500&33KN, CLEVIS		
15	1	81400275	PIN, ROCKER, SC, 7MPa, 63B		
14	1	39054017	BU RING, (-033)	X	39054023
13	1	39054016	BU RING, (1.5x.125x.063)	X	X
12	1	39052030	SEAL, CROWN, 1-3/4x2-1/8x1/4	X	39V52030
11	2	39050042	O-RING, (-011)	X	39051025
10	1	39011075	SEAL, LOADED LIP	X	39V11075
9	2	30601144	PLUG, SOCH, SAE 4		
8	3	23650004	BALL, TUNGSTEN-CARBIDE.250		
7	3	23350066	SPRING, COMPRESSION		
6	2	23340005	STOCK, CORD, .63 X 1.31, 50, NBR		
5	2	23050024	RING, RTNG, EXT, 0.625		
4	10	21500304	SHCS, M6 X 1.0-6G X 20MM		
3	2	21500200	WASHER		
2	3	21500031	SHCS, M5 X 0.8 X 14, ALY		
1	2	21500019	SCREW, CAP, BTNH, M3 X 6, ALY		

PARTS LIST

ASSEMBLIES AFFECTED
14062120, 14062121
14062122, 14062123
14062124, 14062125



VEKTEK, INC.
1334 E. SIXTH AVE. P.O. BOX 625
EMPORIA, KS. 66801 U.S.A.

PARTS LIST, SC, LP, TC, TF, 8800, DA, CLEVIS

SIZE A **PL1465** REV A

FORM FEG035_PL_ASIZE, REV. B

A	5867	RELEASE	NPETERS	12/11/25
REV	IN ACCORDANCE WITH ECN	EFFECTIVE DATE	REVISED BY	DATE
DRW BY:	NPETERS	DRAWING STATUS: Released		
DATE:	12/4/25	PRODUCTION APPROVED FOR RELEASED STATUS ONLY		