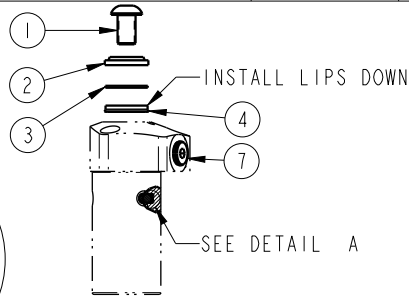
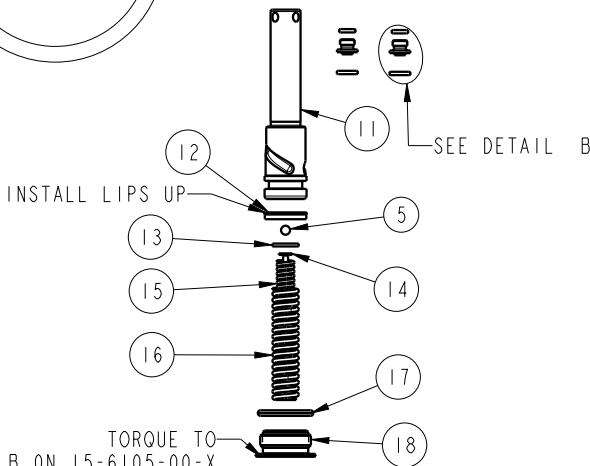
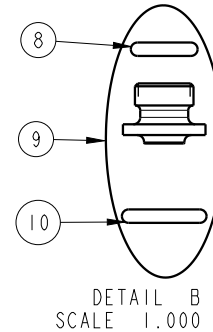
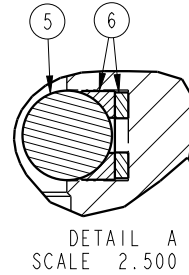


NO.	QTY.	DESCRIPTION	1			2		
			15-6105-00-X	15-6109-00-X	15-6113-00-X	STANDARD SEAL KIT	FLUOROCARBON SEAL KIT	SPRING KIT
1	1	BUTTON HEAD CAP SCREW	21-4110-01	21-4100-09	21-4100-39	NO	NO	NO
2	1	WIPER, ROD (FLUOROCARBON)	39-0530-04	39-0530-01	39-0530-00	YES	YES	NO
3	1	BACK-UP RING, ROD	39-F540-00	39-F540-01	39-F540-02	YES	YES	NO
4	1	SEAL, ROD (STANDARD)	39-0100-38	39-0100-20	39-0110-46	YES	NO	NO
	1	SEAL, ROD (FLUOROCARBON)	39-0520-14	39-V100-20	39-V110-46	NO	YES	NO
5	2	BALL, STEEL ALLOY	23-6000-14	23-6000-11	23-6000-02	YES	YES	NO
6	1	BALL SEAT ASSEMBLY	90-1999-88	90-1999-89	90-1999-90	YES	YES	NO
7	1	BREATHER	91-5900-01	92-0900-01	92-0900-01	NO	NO	NO
8	2	O-RING, ADAPTOR (STANDARD)	39-0500-36	39-0500-36	39-0500-36	YES*	NO	NO
	2	O-RING, ADAPTOR (FLUOROCARBON)	39-0510-24	39-0510-24	39-0510-24	NO	YES*	NO
9	2	MANIFOLD MOUNT ADAPTOR (STANDARD)	30-8711-20	30-8711-20	30-8711-20	YES	NO	NO
	2	MANIFOLD MOUNT ADAPTOR (FLUOROCARBON)	30-8711-20F	30-8711-20F	30-8711-20F	NO	YES	NO
10	2	O-RING, MANIFOLD (STANDARD)	39-0500-42	39-0500-42	39-0500-42	YES*	NO	NO
	2	O-RING, MANIFOLD (FLUOROCARBON)	39-0510-25	39-0510-25	39-0510-25	NO	YES*	NO
11	1	PLUNGER	81-5105-00	81-5109-01	81-5113-01	NO	NO	NO
12	1	SEAL, PLUNGER (STANDARD)	39-0100-36	39-0100-15	39-0110-27	YES	NO	NO
	1	SEAL, PLUNGER (FLUOROCARBON)	39-0520-10	39-0520-11	39-0520-12	NO	YES	NO
13	1	PIVOT DISK	N/A	81-5909-01	81-5913-01	NO	NO	YES
14	1	ROD, SPRING SUPPORT	81-5905-01	N/A	N/A			
15	1	INNER SPRING	23-3100-08	23-3110-13	23-3130-09	NO	NO	YES
16	1	OUTER SPRING	23-3110-17	23-3130-08	23-3130-10	NO	NO	YES
17	1	O-RING, RETAINER (FLUOROCARBON)	39-V000-36	39-0510-31	39-T550-03	YES	YES	NO
18	1	RETAINER	81-4000-28	81-4000-29	81-4000-30	NO	NO	NO
N/A	N/A	SEAL KIT (STANDARD)	60-1501-39	60-1501-28	60-1501-29	INCLUDED IN KIT		
N/A	N/A	SEAL KIT (FLUOROCARBON)	6V-1501-39	6V-1501-28	6V-1501-29			
N/A	N/A	SPRING KIT	61-1503-05	61-1503-09	61-1503-13			

**NO SILICONE**



\*NOTE: ITEMS INCLUDED IN NO. 9



NOTES:  
 1. APPLY LUBRICANT TO ALL SEALS PRIOR TO INSTALLATION.  
 2. DO NOT USE SILICONE TYPE LUBRICANTS.

TORQUE TO  
 13 FT-LB ON 15-6105-00-X  
 30 FT-LB ON 15-6109-00-X  
 13 FT-LB ON 15-6113-00-X

**PARTS LIST**



D	5279	RELEASE	ALS	4/18/24
REV	IN ACCORDANCE WITH ECN	EFFECTIVE DATE	REVISED BY	DATE
DRW BY:	RLK	<b>DRAWING STATUS: Released</b>		
DATE:	5/20/21	PRODUCTION APPROVED FOR RELEASED STATUS ONLY		

ASSEMBLIES AFFECTED

15-6105-00-X  
 15-6109-00-X  
 15-6113-00-X

PARTS LIST, SC, VC, TF, SA

SIZE A **PL15122**

REV D