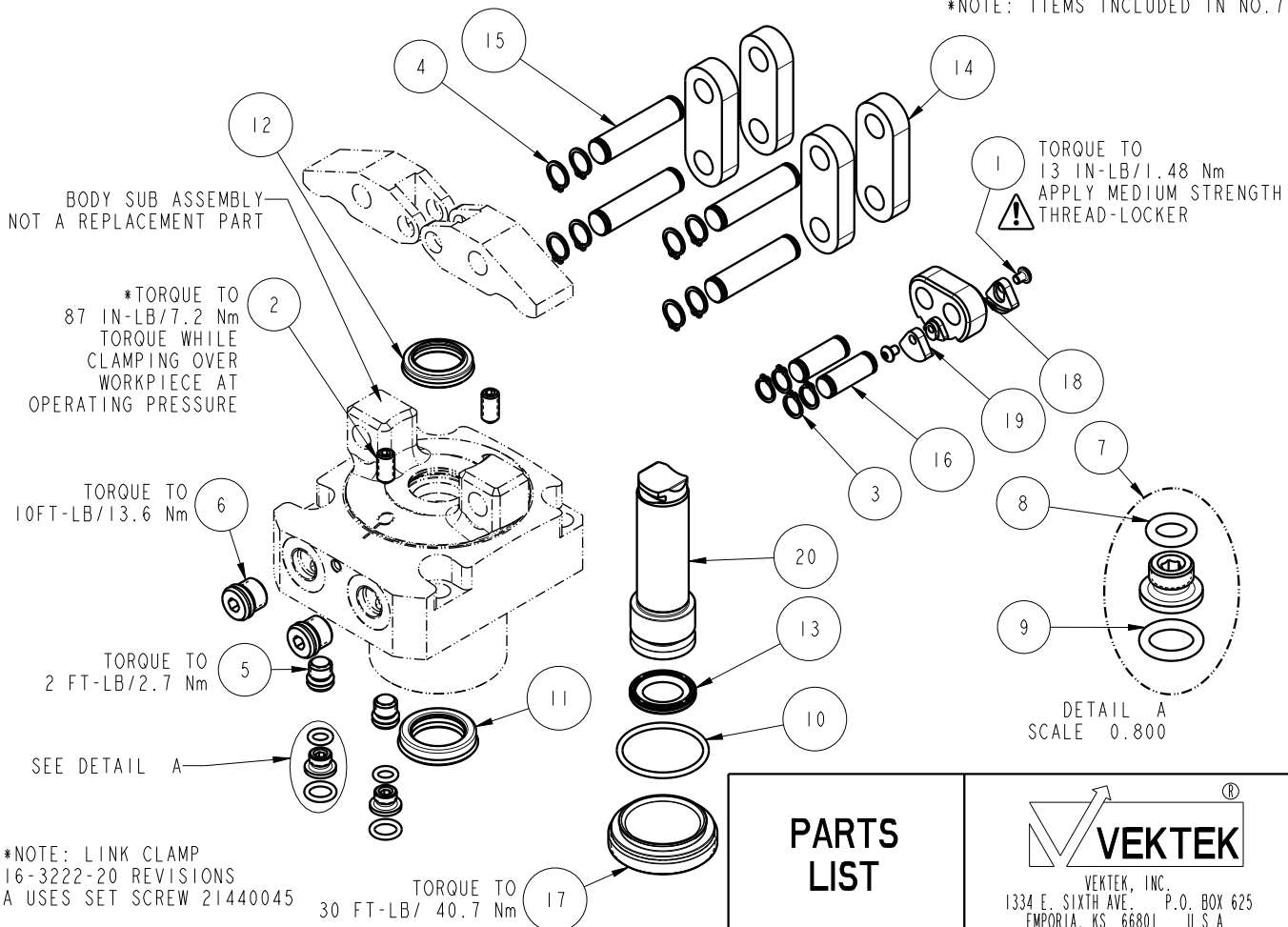


NO	QTY	PART NO	DESCRIPTION	STD SEAL KIT
1	2	21500051	SCREW, CAP, BTNH, M3 X 4, SSTL	
2	2	21500319	SCREW, SET, CUP PT, M6 X 1 X 12	
3	4	23050034	RING, RTNG, EXT, 0.312	X
4	8	23050035	RING, RTNG, EXT, 0.354	X
5	2	30601122	PLUG, SOCH, SAE 2	
6	2	30601144	PLUG, SOCH, SAE 4	
7	2	30871120	ASSY, ADAPTER, SC, TF, MM	X
8	2	39050036	O-RING, (-009)	X*
9	2	39050042	O-RING, (-011)	X*
10	1	39051151	O-RING, (28mm X 2)	X
11	1	39052061	SEAL, ROD, RSD, 18, 85A, AU	X
12	1	39053042	SEAL, WIPER, SNAP IN, WED, 18, 94A, AU	X
13	1	39056033	SEAL, CAP, PISTON, 22.5, 94A, AU	X
14	4	81600147	LINK, LC, 7MPa, 40B	
15	4	81600152	PIN, LINK, LC, 7MPa, 40B	
16	2	81600157	PIN, PLUNGER, LC, 7MPa, 40B	
17	1	81600273	CAP, LC, TL360, 2400/10.4kN	
18	1	81600282	PIVOT, TL360-TWIN, 2600 LB	
19	2	81600285	COVER, PIVOT, TL360-TWIN, 2600 LB	
20	1	81600294	PLUNGER, TL360-TWIN, 2600 LB	
N/A	N/A	60160208	KIT, SEAL, ASSY, LC, TL360-TWIN, DA, 2600lb	NOTED

\*NOTE: ITEMS INCLUDED IN NO. 7



\*NOTE: LINK CLAMP  
16-3222-20 REVISIONS  
A USES SET SCREW 21440045

### PARTS LIST



VEKTEK, INC.  
1334 E. SIXTH AVE. P.O. BOX 625  
EMPORIA, KS. 66801 U.S.A.

ASSEMBLIES AFFECTED  
16-3222-20

PARTS LIST, ASSY, LC, TL360-TWIN, DA, 2600lb

ROTARY LUG

SIZE  
A PL1628

REV  
B

B	5051	RELEASE	ALS	2/28/23
REV	IN ACCORDANCE WITH ECN	EFFECTIVE DATE	REVISED BY	DATE
DRW BY:	A. THOMSEN	DRAWING STATUS: <b>Released</b>		
DATE:	05-MAY-2020	PRODUCTION APPROVED FOR RELEASED STATUS ONLY		

FORM FEG035\_PL\_ASIZE, REV. B

SHEET 1 OF 1