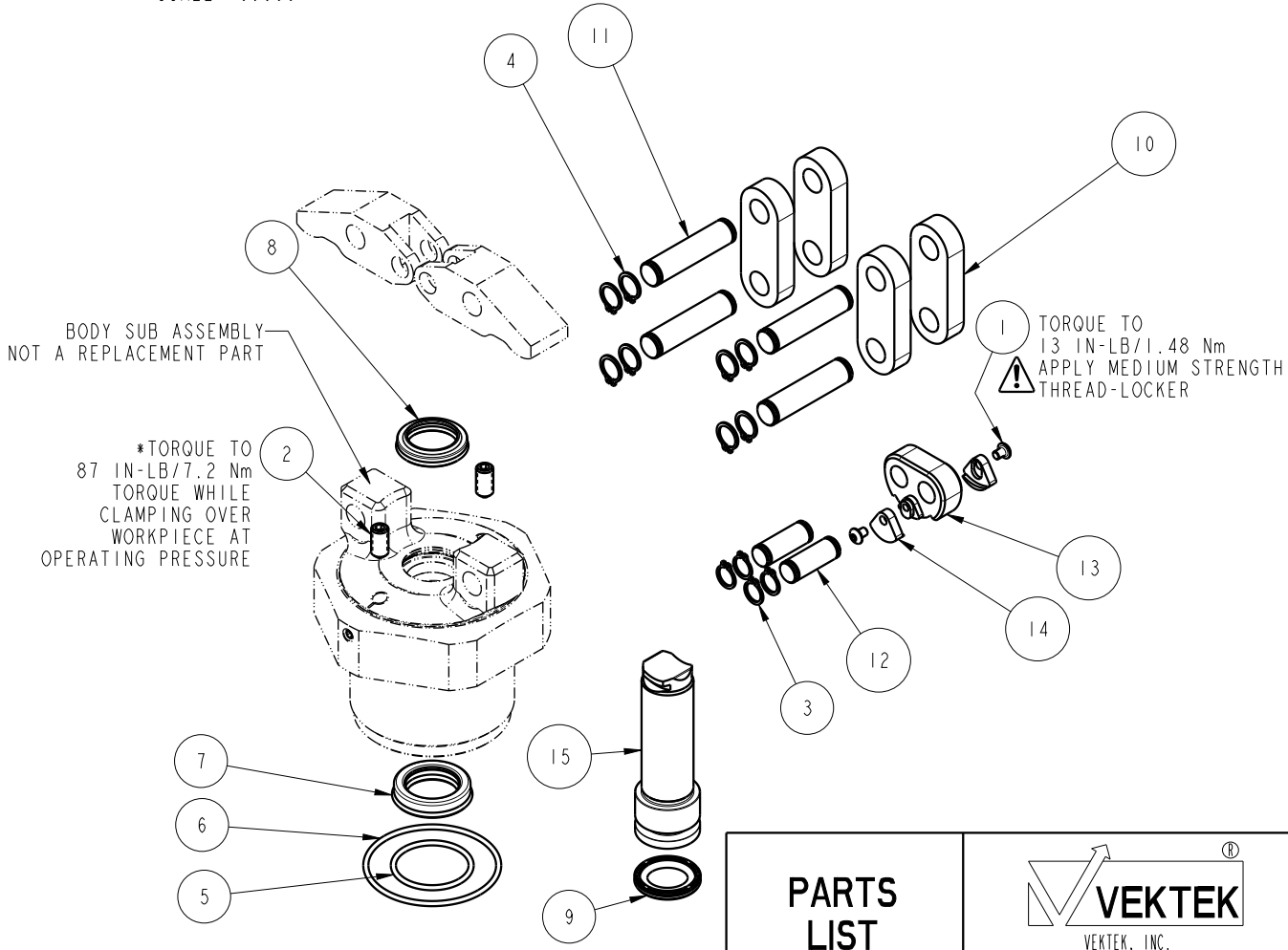


SECTION A-A
SCALE 0.600

NO	QTY	PART NO	DESCRIPTION	STD SEAL KIT
1	2	21500051	SCREW, CAP, BTNH, M3 X 4, SSSL	
2	2	21500319	SCREW, SET, CUP PT, M6 X 1 X 12	
3	4	23050034	RING, RTNG, EXT, 0.312	X
4	8	23050035	RING, RTNG, EXT, 0.354	X
5	1	39051185	O-RING (-022), 1 X 1/16 X 1-1/8	X
6	1	39051186	O-RING (-031), 1-3/4 X 1/16 X 1-7/8	X
7	1	39052061	SEAL, ROD, RSD, 18, 85A, AU	X
8	1	39053042	SEAL, WIPER, SNAP IN, WED, 18, 94A, AU	X
9	1	39056033	SEAL, CAP, PISTON, 22.5, 94A, AU	X
10	4	81600147	LINK, LC, 7MPa, 40B	
11	4	81600152	PIN, LINK, LC, 7MPa, 40B	
12	2	81600157	PIN, PLUNGER, LC, 7MPa, 40B	
13	1	81600282	PIVOT, TL360-TWIN, 2600 LB	
14	2	81600285	COVER, PIVOT, TL360-TWIN, 2600 LB	
15	1	81600294	PLUNGER, TL360-TWIN, 2600 LB	
N/A	N/A	60160214	KIT, SEAL, ASSY, LC, CM, TL360-TWIN, DA, 2600lb	NOTED


*NOTE: LINK CLAMP
16-4222-20 REVISIONS
A USES SET SCREW 21440045



BODY SUB ASSEMBLY
NOT A REPLACEMENT PART

*TORQUE TO
87 IN-LB/7.2 Nm
TORQUE WHILE
CLAMPING OVER
WORKPIECE AT
OPERATING PRESSURE

1 TORQUE TO
13 IN-LB/1.48 Nm
APPLY MEDIUM STRENGTH
THREAD-LOCKER

PARTS LIST	 VEKTEK, INC. 1334 E. SIXTH AVE. P.O. BOX 625 EMPORIA, KS. 66801 U.S.A.	
	PARTS LIST, ASSY, LC, CM, TL360-TWIN, DA, 2600lb	
ASSEMBLIES AFFECTED 16-4222-20	ROTARY LUG	
SIZE A	PL1634	REV B

B	5051	RELEASE	ALS	2/28/23
REV	IN ACCORDANCE WITH ECN	EFFECTIVE DATE	REVISED BY	DATE
DRW BY:	A. THOMSEN			
DATE:	05-MAY-2020			
DRAWING STATUS: Released		PRODUCTION APPROVED FOR RELEASED STATUS ONLY		

SHEET 1 OF 1