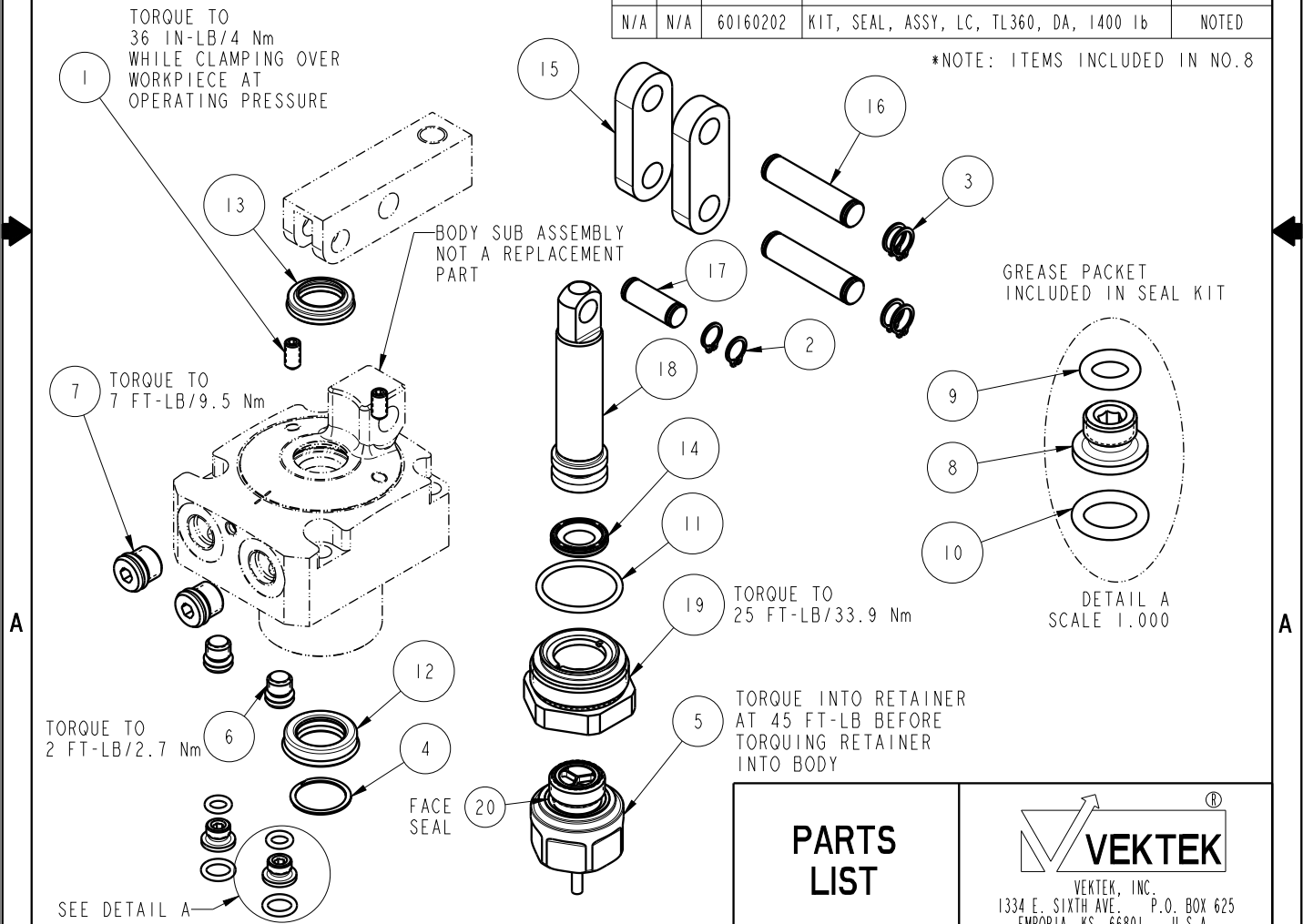



NO	QTY	PART NO	DESCRIPTION	STD SEAL KIT
1	2	21500318	SCREW, SET, CUP PT, M5 X .8 X 10	
2	2	23050034	RING, RTNG, EXT, 0.312	X
3	4	23050035	RING, RTNG, EXT, 0.354	X
4	1	23050051	RETAINING RING, SPIRAL, INTL	X
5	1	29740200	SENSOR, ULTRASONIC, M12, 1m	
6	2	30601122	PLUG, SOCH, SAE 2	
7	2	30601144	PLUG, SOCH, SAE 4	
8	2	30871120	ASSY, ADAPTER, SC, TF, MM	X
9	2	39050036	O-RING, (-009)	X*
10	2	39050042	O-RING, (-011)	X*
11	1	39051150	O-RING, (24mm X 2)	X
12	1	39052060	SEAL, ROD, RSD, 15, 85A, AU	X
13	1	39053041	SEAL, WIPER, SNAP IN, WED, 15, 94A, AU	X
14	1	39056032	SEAL, CAP, PISTON, 18, 94A, AU	X
15	2	81600147	LINK, LC, 7MPa, 40B	
16	2	81600152	PIN, LINK, LC, 7MPa, 40B	
17	1	81600157	PIN, PLUNGER, LC, 7MPa, 40B	
18	1	81600252	PLUNGER, LC, TL360, DA, 1400/6.22kN	
19	1	81600330	CAP, LC, TL360, 1400/6.22kN, US	
20	1	43000040	SENSOR, FACE SEAL	
N/A	N/A	60160202	KIT, SEAL, ASSY, LC, TL360, DA, 1400 lb	NOTED

*NOTE: ITEMS INCLUDED IN NO.8



PARTS LIST	 VEKTEK VEKTEK, INC. 1334 E. SIXTH AVE. P.O. BOX 625 EMPORIA, KS. 66801 U.S.A.	
	ASSEMBLIES AFFECTED 16-3218-00-US	PARTS LIST, ASSY, LC, TL360, DA, 1400lb, US
SIZE A	PL1637	REV A

A	5531	RELEASE	ALS	11/5/24
REV	IN ACCORDANCE WITH ECN	EFFECTIVE DATE	REVISED BY	DATE
DRW BY:	ALS	DRAWING STATUS: Released PRODUCTION APPROVED FOR RELEASED STATUS ONLY		
DATE:	7-19-24			