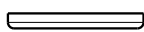
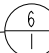
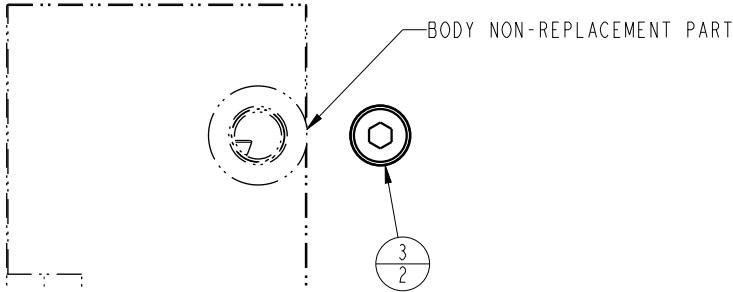
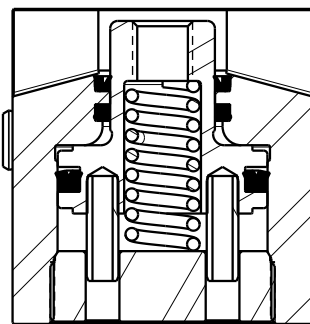
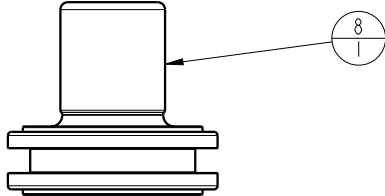




1  
  USE VEKTEK AT200165 TO INSTALL

  INSTALL WITH LIPS FACING BORE  
 USE VEKTEK AT200192 TO INSTALL

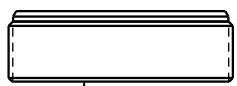
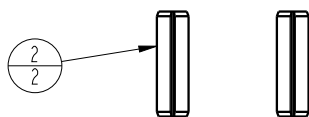
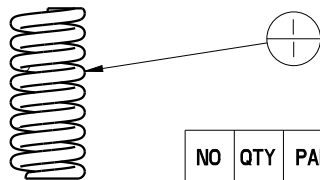


P/N 82140014 HAS 1/2-13 UNC THREADS  
 P/N 82140015 HAS 5/8-11 UNC THREADS



  INSTALL WITH LIPS FACING PLUNGER THREADS

LUBRICATE ALL SEALS WITH CLEAN HYDRAULIC OIL PRIOR TO ASSEMBLY  
 DO NOT USE SILICONE BASED LUBRICANTS



 TORQUE TO 150 FT-LB  
 USE VEKTEK AT200179 TO INSTALL

NO	QTY	PART NO	DESCRIPTION	20-1116-00	20-1116-01	STD SEAL KIT
1	1	23355015	SPRING, COMPRESSION	X	X	
2	2	23520005	PIN, SPRING, SLOTTED, 1/4 X 7/8, SST	X	X	
3	2	30601144	PLUG, SOCH, SAE 4	X	X	
4	1	39052050	SEAL, U-CUP, 1 3/8 X 3/16 X 1 3/4	X	X	X
5	1	39052054	SEAL, LL, (7/8 X 1/8 X 1/8 X 1 1/8)	X	X	X
6	1	39053054	WIPER, PRESS-IN, (7/8)	X	X	X
7	1	82040014	CAP, CYL, BB, PULL, 9000LB	X	X	
8	1	82140014	PLUNGER, CYL, CM, PULL, 9000LB	X		
-	1	82140015	PLUNGER, CYL, CM, PULL, 9000LB		X	
N/A	N/A	60201121	KIT, SEAL, CYL, BB, PULL, 9000LB	N/A	N/A	NOTED

**PARTS LIST**



VEKTEK, INC.  
 1334 E. SIXTH AVE. P.O. BOX 625  
 EMPORIA, KS. 66801 U.S.A.

ASSEMBLIES AFFECTED  
 20-1116-00  
 20-1116-01

**PARTS LIST, ASSY, CYL, BB, PULL, 9000LB**

1/2-13 PLNGER THD

SIZE A **PL2198**

REV A

A	3539	RELEASE	MJUST	7/18/18
REV	IN ACCORDANCE WITH ECN	EFFECTIVE DATE	REVISED BY	DATE
DRW BY:	MJUST	<b>DRAWING STATUS: Released</b>		
DATE:	3/15/18	PRODUCTION APPROVED FOR RELEASED STATUS ONLY		

SHEET 1 OF 1