

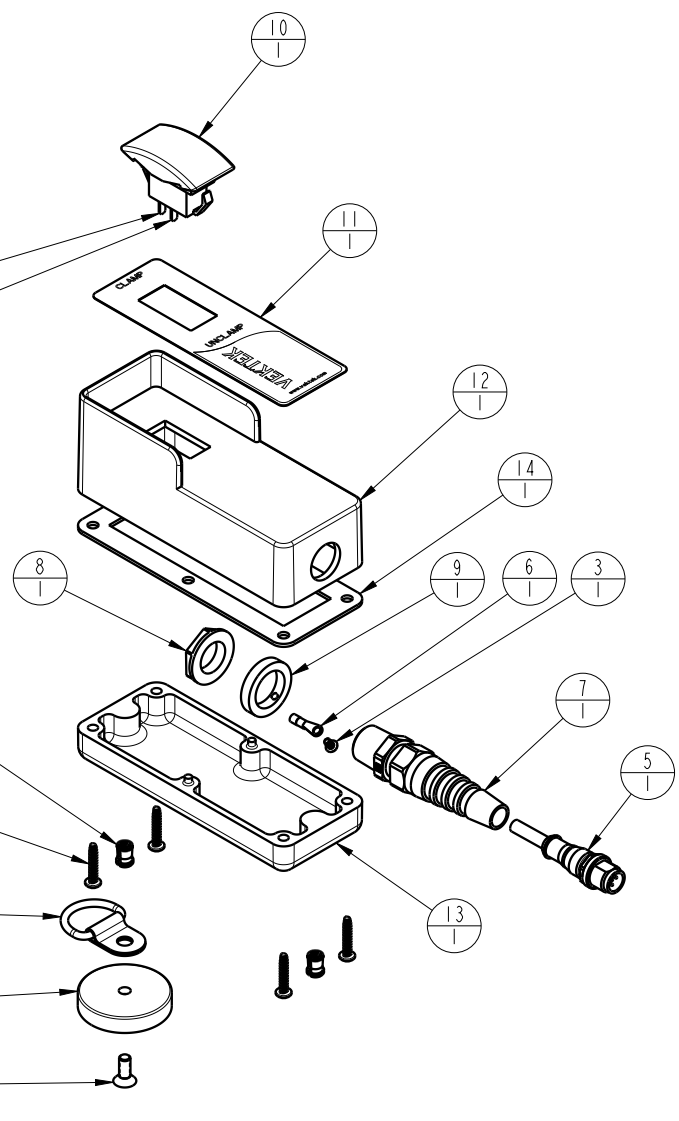
## PARTS LIST, PENDANT, 3/2 VALVE, NC

| NO  | QTY | PART NO  | DESCRIPTION                         |
|-----|-----|----------|-------------------------------------|
| N/A | N/A | 95595538 | ASSY, PENDANT, 3/2 VALVE, NC        |
| 1   | 1   | 21410062 | FLAT HEAD CAP SCREW, 10-32 x 1/2    |
| 2   | 4   | 21410093 | SCREW, TORX, 6-19 X .75             |
| 3   | 1   | 21410094 | SCREW, RND HEAD, 4-40 X .19         |
| 4   | 2   | 21420028 | INSERT, THREADED, 10-32 x 3/8       |
| 5   | 1   | 27542200 | CABLE, M12, 5 POLE, MALE, 2M        |
| 6   | 1   | 28112100 | TERMINAL, RING, INSUL, 18-22 GA, #4 |
| 7   | 1   | 28611201 | RELIEF, STRAIN, CORD, FLEX, 3/8 NPT |
| 8   | 1   | 28611202 | NUT, LOCK, GLAND, 3/8 NPT           |
| 9   | 1   | 28611203 | RING, GROUNDING, 3/8 NPT            |
| 10  | 1   | 29121101 | SWITCH, ROCKER, 2 POSITION          |
| 11  | 1   | 67040079 | DECAL, SWITCH, PENDANT              |
| 12  | 1   | 85595027 | BOX, SWITCH, PENDANT, ROCKER        |
| 13  | 1   | 85595028 | COVER, SWITCH, PENDANT              |
| 14  | 1   | 85595029 | GASKET, SWITCH, PENDANT             |
| 15  | 1   | 85595034 | MAGNET, CERAMIC, 1.57 X .31         |
| 16  | 1   | 85595035 | RING, TIE-DOWN, 1/4                 |

PIN 4, BLACK WIRE  
PIN 1, BROWN WIRE

TIGHTEN UNTIL SNUG  
DO NOT OVER TIGHTEN

TIGHTEN UNTIL SNUG  
DO NOT OVER TIGHTEN



- NOTE:
1. STRIP APPROX. 4" OF INSULATION FROM CABLE AND 1/4" FROM INDIVIDUAL WIRES BEING USED.
  2. SOLDER WIRES AS SHOWN TO SWITCH TERMINALS.
  3. CRIMP GREEN/YELLOW WIRE TO RING TERMINAL AND SCREW TO GROUND RING.
  4. CRIMP EACH UNUSED WIRE WITH INSULATED CAP.