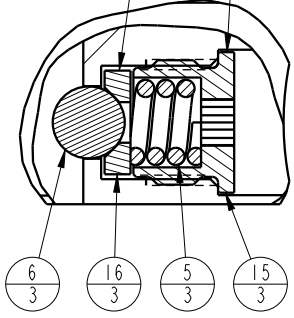



APPLY LUBRICANT TO ALL SEALS  
PRIOR TO INSTALLATION.  
DO NOT USE SILICONE TYPE LUBRICANTS.  
FOR PROPER ARM MOUNTING SEE ISI505.

TORQUE TO  
100 in-lb/11.3Nm  
BALL SEAT  
TOWARD BALL



DETAIL A  
SCALE 1.500

No.	QTY	PART No.	DESCRIPTION	Std. Seal Kit	FKM Seal Kit
N/A	N/A	ISI505	INSTRUCTION SHEET, ARM INSTALLATION		
N/A	N/A	6V711044	SEAL KIT, FKM		
N/A	N/A	60711044	SEAL KIT, STANDARD		
20	1	39V11051	WIPER,PRESS-IN, (1-1/2)	X	X
19	1	39H51002	O-RING, (-033)	X	39V51002
18	1	81592123	CAM,SC,LP,7500/33KN,STR,TC		
17	1	81542103	BASE, SC, BF, LP, 7500		
16	3	81532108	SEAT, BALL, SC, LP, TC		
15	3	81532107	RETAINER, SC, LP, TC		
14	1	81512111	PLUNGER,SC,LP,7500&33KN,DA,TC		
13	1	39054017	BU RING,(-033)	X	39054023
12	1	39054016	BU RING,(1.5x.125x.063)	X	X
11	1	39052030	SEAL,CROWN,1-3/4x2-1/8x1/4	X	39V52030
10	2	39051041	O-RING, (-006)	X	39V51041
9	2	39050042	O-RING, (-011)	X	39051025
8	1	39011075	SEAL, LL, (1-1/2 X 1/8 X 1/8 1-3/4)	X	39V11075
7	2	30601144	PLUG, SOCH, SAE 4		
6	3	23650004	BALL,TUNGSTEN-CARBIDE.250		
5	3	23350066	SPRING, COMPRESSION		
4	10	21500305	SHCS, M8 X 1.25-6G X 30MM		
3	2	21500200	WASHER		
2	3	21500031	SHCS, M5 X 0.8 X 14, ALY		
1	2	21500019	SCREW, CAP, BTNH, M3 X 6, ALY		

<b>PARTS LIST</b>	 <b>VEKTEK</b> VEKTEK, INC. 1334 E. SIXTH AVE. P.O. BOX 625 EMPORIA, KS. 66801 U.S.A.	
	ASSEMBLIES AFFECTED 14222102 14122102F	PARTS LIST, ASSY,SC,LP,TC,BF,7500,DA,STR
SIZE A	PL7176	REV C

C	5762	RELEASE	JDW	07/18/25
REV	IN ACCORDANCE WITH ECN	EFFECTIVE DATE	REVISED BY	DATE
DRW BY: JDW	DRAWING STATUS: <b>Released</b>			
DATE: 6-17-11	PRODUCTION APPROVED FOR RELEASED STATUS ONLY			

