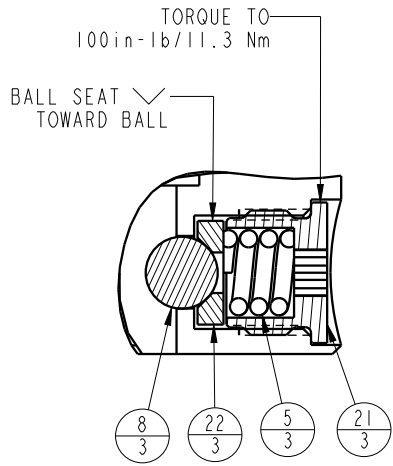
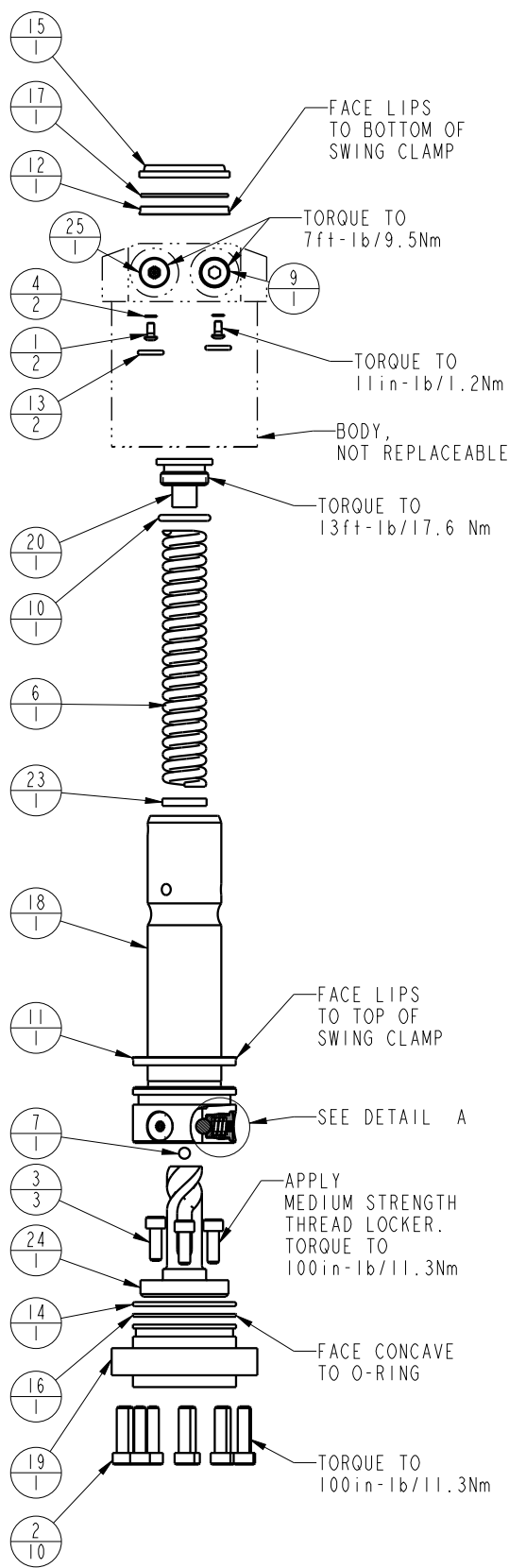


APPLY LUBRICANT TO ALL SEALS
PRIOR TO INSTALLATION.
DO NOT USE SILICONE TYPE LUBRICANTS.
FOR PROPER ARM MOUNTING SEE IS1505.



DETAIL A
SCALE 1.500

No.	QTY	PART No.	DESCRIPTION	Std. Seal Kit	FKM Seal Kit	Spring Kit
N/A	N/A	IS1505	INSTRUCTION SHEET, ARM INSTALLATION			
N/A	N/A	61704022	SPRING KIT			
N/A	N/A	6V711031	SEAL KIT, FKM			
N/A	N/A	60711031	SEAL KIT, STANDARD			
25	1	92090001	ASSY, BREATHER, SAE #4			
24	1	81591822	CAM, SC, LP, 5000/22KN, RH, TC			
23	1	81591302	DISK, Ø.75 X .12			X
22	3	81532108	SEAT, BALL, SC, LP, TC			
21	3	81532107	RETAINER, SC, LP, TC			
20	1	81531811	PLUG, SC, LP, 5000&22KN, SA, TC			
19	1	81531809	CAP, END, SC, LP, 22KN/5000			
18	1	81511810	PLUNGER, SC, LP, 5000&22KN, SA, TC			
17	1	39054008	BU RING, (-218)	X	X	
16	1	39054007	BU RING, (-030)	X	39054021	
15	1	39053005	WIPER, SNAP-IN, (1-1/4)	X	X	
14	1	39051042	O-RING, (-030)	X	39V01021	
13	2	39050042	O-RING, (-011)	X	39051025	
12	1	39011060	SEAL, BEVEL W/HHEEL INSERT, 1-1/4 x 1/8 x 1-1/2	X	39052015	
11	1	39011055	SEAL, BEVEL, 1-9/16 x 3/32 x 1-3/4	X	39052013	
10	1	39000029	O-RING, (-115)	X	39V00029	X
9	1	30601144	PLUG, SOCH, SAE 4			
8	3	23650004	BALL, TUNGSTEN-CARBIDE, 250			
7	1	23600011	BALL, STEEL, ALLOY, .187			X
6	1	23350067	SPRING, COMPRESSION			X
5	3	23350066	SPRING, COMPRESSION			
4	2	21500200	WASHER			
3	3	21500031	SHCS, M5 x 0.8 x 14, ALY			
2	10	21500022	SHCS, M5 x .8-66 x 20, ALY			
1	2	21500019	SCREW, CAP, BTNH, M3 X 6, ALY			

PARTS LIST	
	VEKTEK, INC. 1334 E. SIXTH AVE. P.O. BOX 625 EMPORIA, KS. 66801 U.S.A.
ASSEMBLIES AFFECTED 14051800 14051800F	PARTS LIST, ASSY, SC, LP, TC, TF, 5000, SA, RH
SIZE A	PL7183
	REV B

B	5922	RELEASE	JDW	03/23/26
REV	IN ACCORDANCE WITH ECN	EFFECTIVE DATE	REVISED BY	DATE
DRW BY:	JDW	DRAWING STATUS: Released		
DATE:	05/01/18	PRODUCTION APPROVED FOR RELEASED STATUS ONLY		

