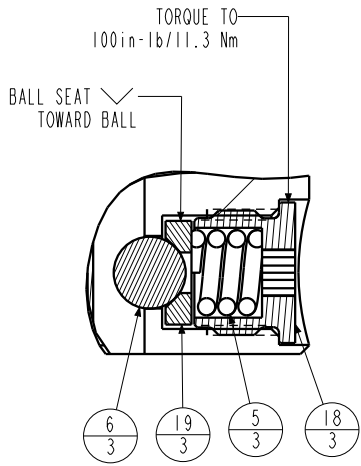
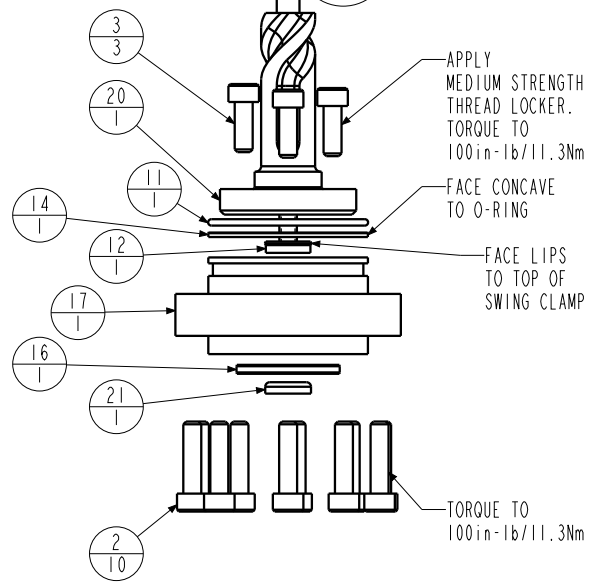
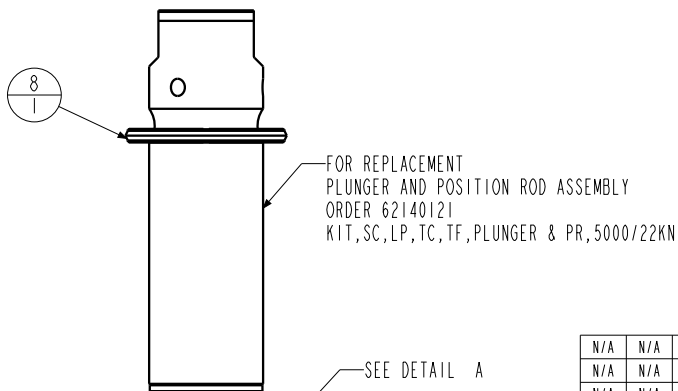


APPLY LUBRICANT TO ALL SEALS
PRIOR TO INSTALLATION.
DO NOT USE SILICONE TYPE LUBRICANTS.
FOR PROPER ARM MOUNTING SEE IS1505.



DETAIL A
SCALE 1.500



No.	QTY	PART No.	DESCRIPTION	Std. Seal Kit	FKM Seal Kit
N/A	N/A	IS1505	INSTRUCTION SHEET, ARM INSTALLATION		
N/A	N/A	6V711052	SEAL KIT, FKM		
N/A	N/A	60711052	SEAL KIT, STANDARD		
21	1	39V10029	WIPER, PRESS-IN, (1/4)	X	X
20	1	81591832	CAM, SC, LP, 5000/22KN, RH, TC, PR		
19	3	81532108	SEAT, BALL, SC, LP, TC		
18	3	81532107	RETAINER, SC, LP, TC		
17	1	81531819	CAP, END, SC, LP, 22KN/5000, PR		
16	1	81500040	RING, LOCATOR, SC, LP, PR		
15	1	39054008	BU RING, (-218)	X	X
14	1	39054007	BU RING, (-030)	X	39054021
13	1	39053005	WIPER, SNAP-IN, (1-1/4)	X	X
12	1	39052043	SEAL, LL, (1/4 x 1/8 x 1/8 x 1/2)	X	39V52043
11	1	39051042	O-RING, (-030)	X	39V01021
10	2	39050042	O-RING, (-011)	X	39051025
9	1	39011060	SEAL, BEVEL W/HHEEL INSERT, 1-1/4 x 1/8 x 1-1/2	X	39052015
8	1	39011056	SEAL, CROWN, 1-9/16 x 1-3/4 x 5/32	X	39V11056
7	2	30601144	PLUG, SOCH, SAE 4		
6	3	23650004	BALL, TUNGSTEN-CARBIDE, 250		
5	3	23350066	SPRING, COMPRESSION		
4	2	21500200	WASHER		
3	3	21500031	SHCS, M5 x 0.8 x 14, ALY		
2	10	21500022	SHCS, M5 x .8-66 x 20, ALY		
1	2	21500019	SCREW, CAP, BTNH, M3 X 6, ALY		

PARTS LIST	
	VEKTEK, INC. 1334 E. SIXTH AVE. P.O. BOX 625 EMPORIA, KS. 66801 U.S.A.
ASSEMBLIES AFFECTED 14061800PR 14061800FPR	PARTS LIST, ASSY, SC, LP, TC, TF, 5000, DA, RH, PR
SIZE A	PL7230

C	5770	RELEASE	JDW	08/02/25
REV	IN ACCORDANCE WITH ECN	EFFECTIVE DATE	REVISED BY	DATE
DRW BY:	JDW	DRAWING STATUS: Released		
DATE:	06/01/18	PRODUCTION APPROVED FOR RELEASED STATUS ONLY		

