



Precision In-Line Flow Control

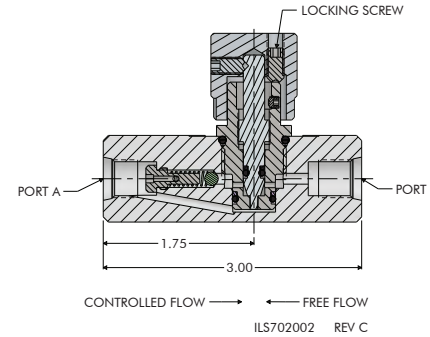
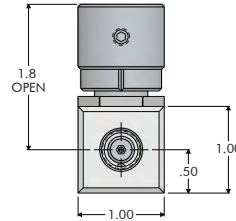
- Micro metering adjustment of master system with 1/64 inch pitch needle valve.
- Protect sensitive components from excessive flow.
- System control.
- Flow controls used as meter-in devices in clamping systems to prevent damage.
- Flows up to 3 gal/min at 5,000 psi maximum pressure.
- Check valve for reverse free flow.
- Available in SAE 4 or SAE 6 port sizes.
- Stainless steel inner valve construction.
- Fluorocarbon seals are standard.
- Locking adjustment knob.



Flow Control

In-Line Flow Control

Model No.	A Port	B Port
70-2000-05	SAE 4	SAE 4
70-2001-11	SAE 6	SAE 6



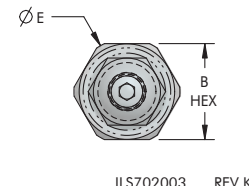
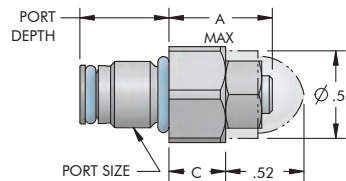
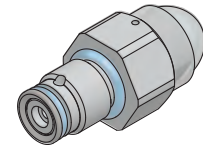
Precision In-Port Flow Control

- Use with Single or Double Acting clamps.
- Meter-In flow control with reverse free flow check valve.
- Smallest high-pressure flow control valve on the market.
- Prevent component cam damage from unexpected or accidental surges in flow rate.
- Adjusting screw is positively retained and will not come out under pressure.
- Flow control requires the use of manifold mount ports.

Consult the double acting work support, the swing clamp or link clamp specifications page for the valve that is appropriate for your application.

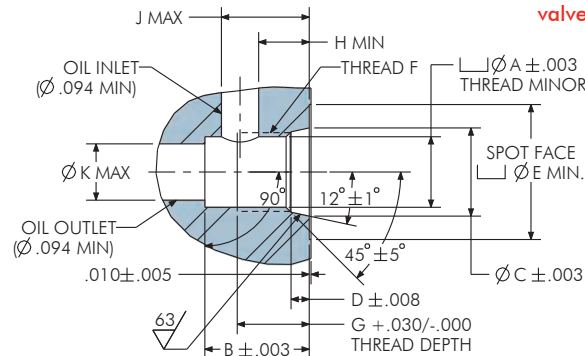
In-Port Flow Control

Model No.	Port Size X Depth	A	B	C	E
70-2037-70	SAE 2 X .48	0.73	0.44	0.36	0.48
70-2037-71	SAE 4 X .58	0.74	0.63	0.37	0.69
70-2037-72	SAE 4 X .75	0.74	0.63	0.37	0.69



ILS702003 REV K

NOTE: Maximum system flow rate is 1.5 gpm (346.5 cu. in./ minute) for all VektorFlo® special function valves unless otherwise noted.



ILS702004 REV D

In-Port Flow Control Cavity Dimensions

Model No.	Size	A	B	C	D	E	F	G	H	J	K
70-2037-70	SAE 2	.272	.480	.360	.082	.682	5/16-24 UNF	.320	.219	.350	.219
70-2037-71 & 70-4437-1X	SAE 4	.392	.580	.490	.101	.750	7/16-20 UNF	.400	.281	.488	.313
70-2037-72 & 70-4437-2X	SAE 4	.392	.750	.490	.101	.750	7/16-20 UNF	.400	.281	.658	.313

