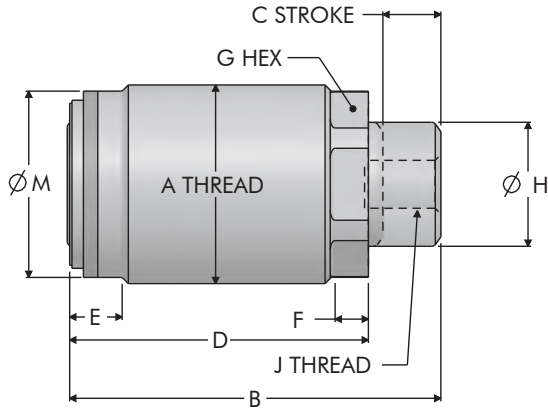


# Work Supports / Spring & Air Advance

## Cartridges

### Spring Advance Cartridge

B-19



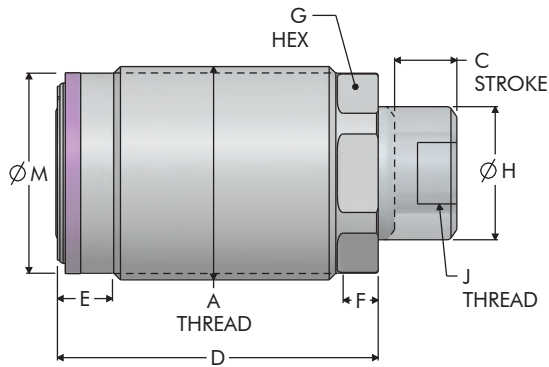
ILS100502 REV H



#### Cartridge Dimensions

Model No.	A	B	C	D	E	F	G	H	J	M
Work Support, Spring Rise, Cartridge										
10-0506-10	1-16	1.87	0.25	1.59	0.27	0.21	0.87	0.63	5/16-18 X 0.27	0.95
10-0509-06	1 5/16-16	2.43	0.38	1.96	0.34	0.25	1.12	0.81	3/8-16 X 0.46	1.22

### Air Advance Cartridge



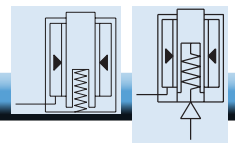
ILS100602 REV H



#### Cartridge Dimensions

Model No.	A	B	C	D	E	F	G	H	J	M
Work Support, Air Rise, Cartridge										
10-0606-10	1-16	1.62	0.25	1.59	0.27	0.21	0.87	0.63	5/16-18 X 0.29	0.95
10-0609-06	1 5/16-16	2.06	0.38	1.96	0.34	0.25	1.12	0.81	3/8-16 X 0.24	1.22





## Cartridge Cavities

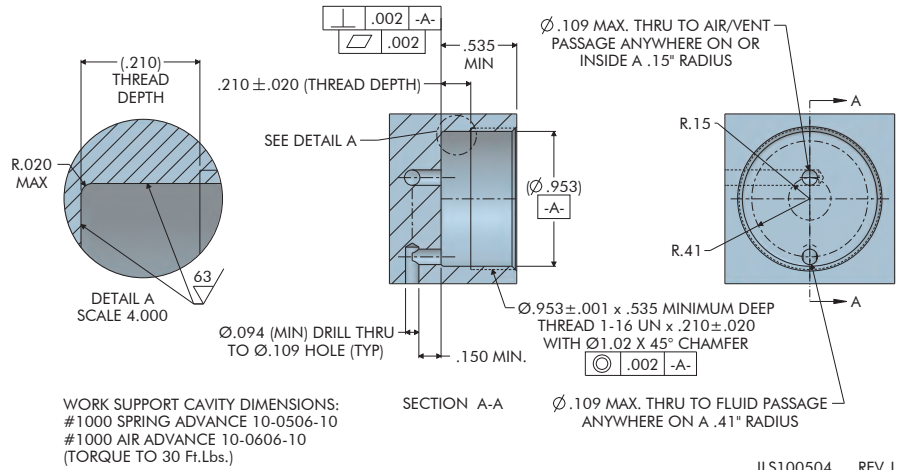
### Spring Advance and Air Advance Cartridge Mount

#### Cavity Check List

- Confirm capacity of item selected.
- Note the sealing surface finish requirements.
- Minimum depth specification represents the nominal depth of the standard Vekttek base dimension.
- Confirm cavity drawing is appropriate for the model number used.
- Note specified thread depth when cutting threads.
- When using a bottoming tap tool, modifications may be required.
- When hand tapping threads, perpendicularity is essential.
- The "fluid" passage is located on the outer diameter and "vent" passage is in the center.

B-20

#### 1,000 lb.



#### 2,500 lb.

